



Consulting Service Agreement with
Mark Thomas & Company, Inc. for
30% Final Design of East West
Connector (Quarry Lakes Parkway,
Phases 3 and 4)



| East West Connector (Quarry Lakes Parkway) Background

Union City became the Lead Agency March 15, 2018.

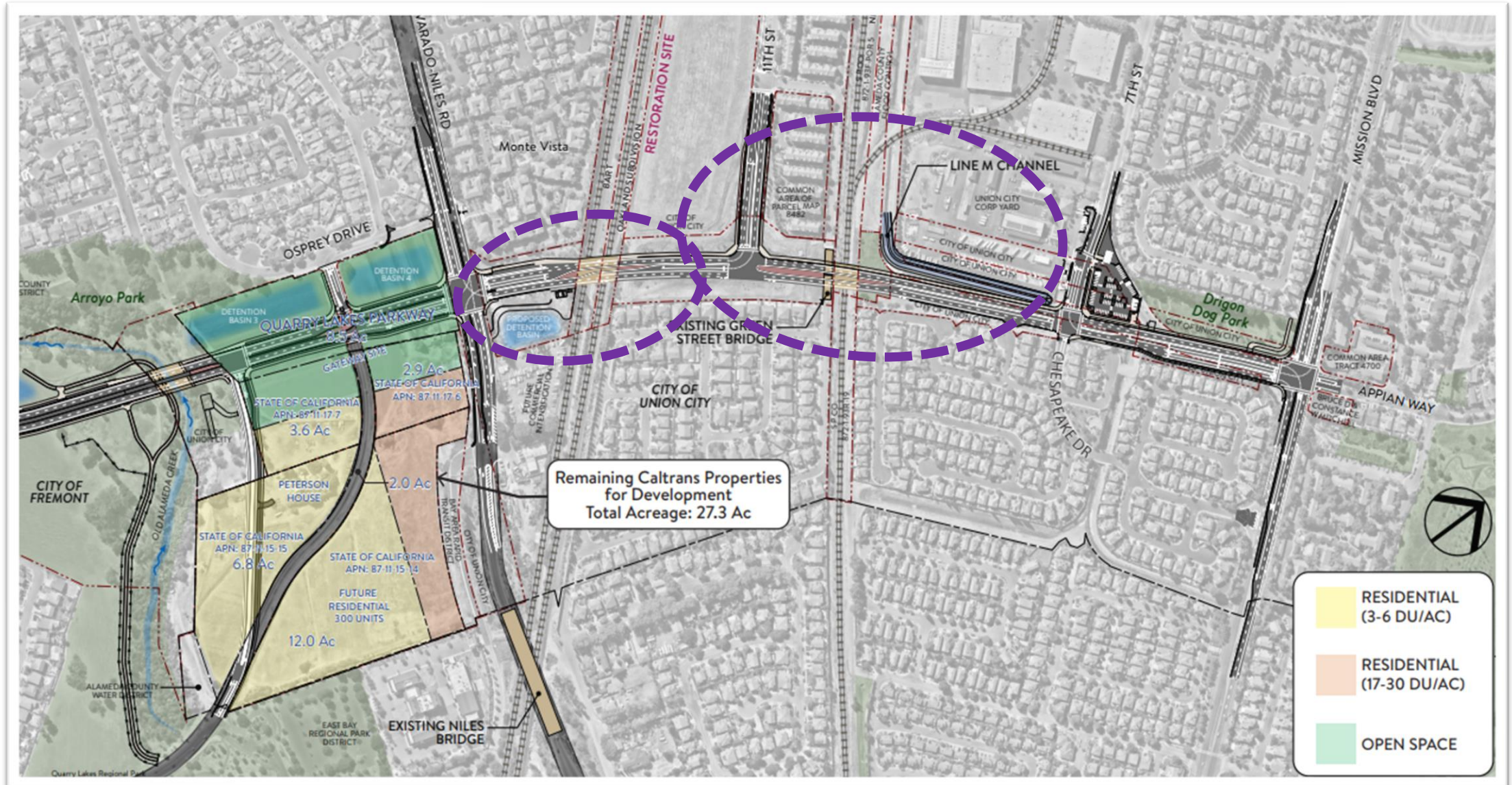
Entered into Project Funding Agreement (PFA) #A18-0046 for \$2.5 million to:

- Evaluate need for additional environmental work
- Prepare a traffic analysis
- Work with transit, pedestrian, and bicycle groups
- Submit updated cost estimate
- Report back upon completion of design work
- Secure regulatory permits (railroad, BART, environmental permits)
- Complete design work

About \$2.0 million remaining in PFA #A18-0046

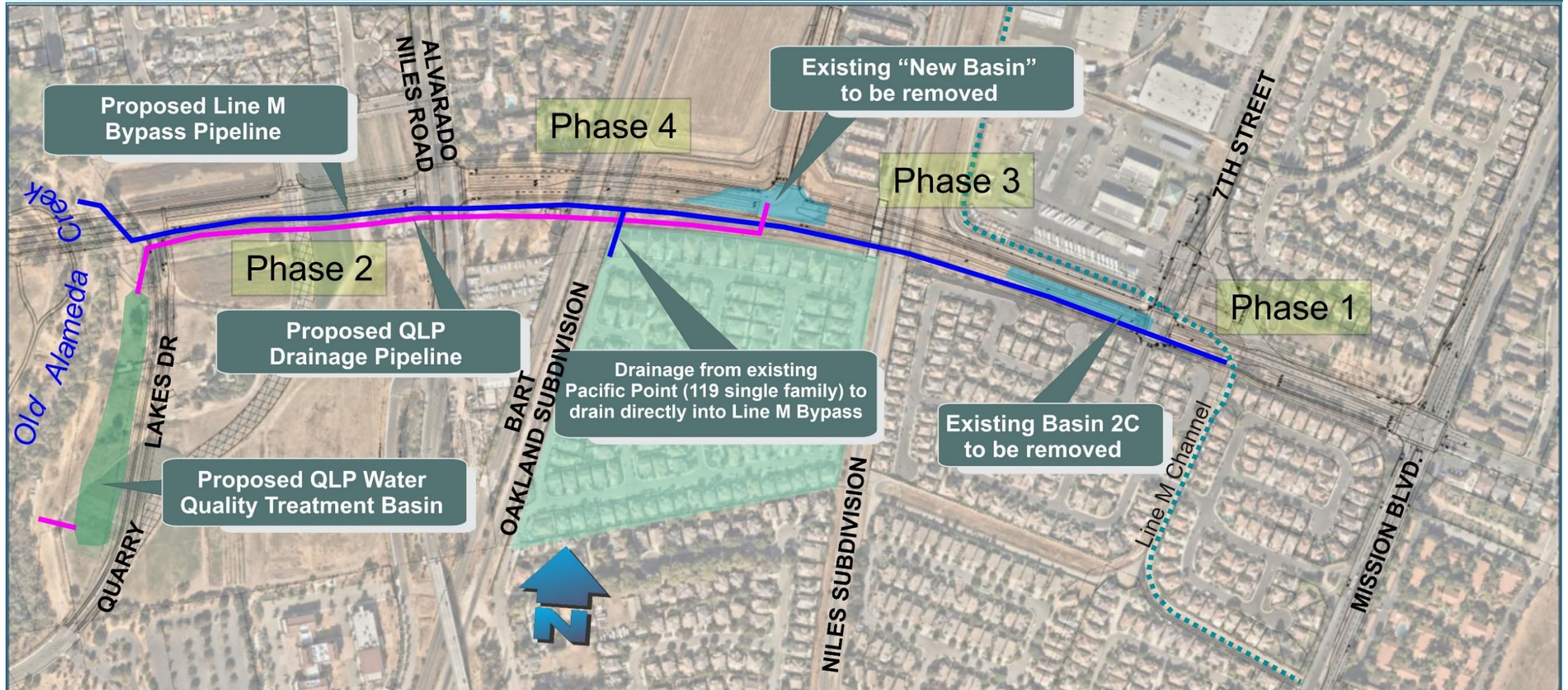
Alameda CTC consented to use of grant funds for 30% design Phases 3 & 4

East West Connector (Quarry Lakes Parkway) Phases 3 & 4



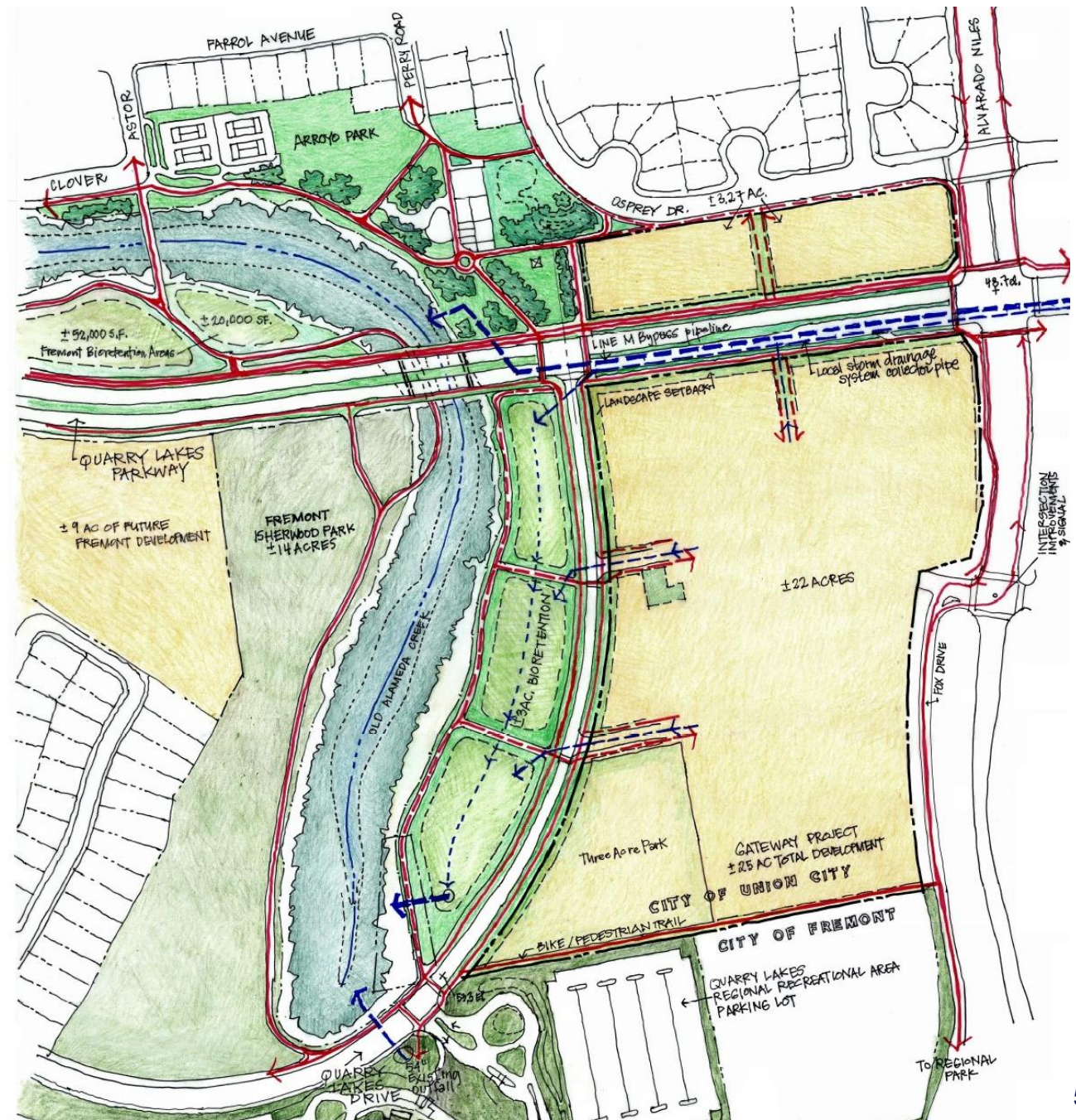
East West Connector (Quarry Lakes Parkway) Drainage System

QUARRY LAKES PARKWAY - REDESIGN OF STORM DRAINAGE SYSTEM



EWC (QLP) Drainage Update

- Extend Line M bypass outfall north of QLP to Old Alameda Creek
- Relocated local stormwater collection/water quality treatment basins to upland of Old Alameda Creek
- Initial design concept support from regulatory agencies
- ***One regulatory permit for entire corridor - need refined design of Phases 3 and 4***



| Phase 3: 11th Street Connection (11th Street to 7th Street)



Phase 3 Project Cost: **\$ 91.5 Million**

- Construct Niles grade separation structure
- Construct retaining walls and concrete slab protection over Aquifer
- Wetland mitigation Basin 2C
- Construct Line M bypass
- Install new traffic signal
- Extend 11th Street to QLP
- Install utilities

| Phase 4: Alvarado-Niles Connection (11th Street to Alvarado-Niles Road)



Phase 4 Project Cost: **\$79.7 Million**

- Construct BART and Niles railroad grade separation structures
- Construct temporary railroad shoofly (detour)
- Construct Retaining Walls
- Construct Line M bypass
- Wetland mitigation—New Basin
- Install and modify utilities
- Install new traffic signal and street lighting

| Need for 30% Design of Phases 3 and 4

- Update Grade Separation Structures to current seismic criteria, railroad design standards
- Evaluate proposed railroad shoofly concepts
- Coordinate with Union Pacific and BART
- Design of gravity flowing Line M bypass
- Continued coordination with ACFCD, regulatory agencies
- Identify wetland mitigation requirements for permit applications
- Update Cost Estimates

REPORT TO ALAMEDA CTC COMMISSION IN MAY 2023

Funds for 30% Design

- \$ 1,878,840 - 2018 East West Connector Project Funding Agreement No. A18-0046
- SB-1 will fund \$208,760
- SB-1 funds will allow City to engage design experts that may not be in Alameda County - Flexibility

Recommendation

Adopt a resolution authorizing the City Manager to execute a Consulting Service Agreement with Mark Thomas & Company, Inc. for Preliminary Engineering (30% Final for East West Connector (Quarry Lakes Parkway, Phases 3 and 4), City Project No. 18-04, in the amount of \$2,087,600 and appropriate \$208,760 from the unassigned fund balance of SB-1 fund