

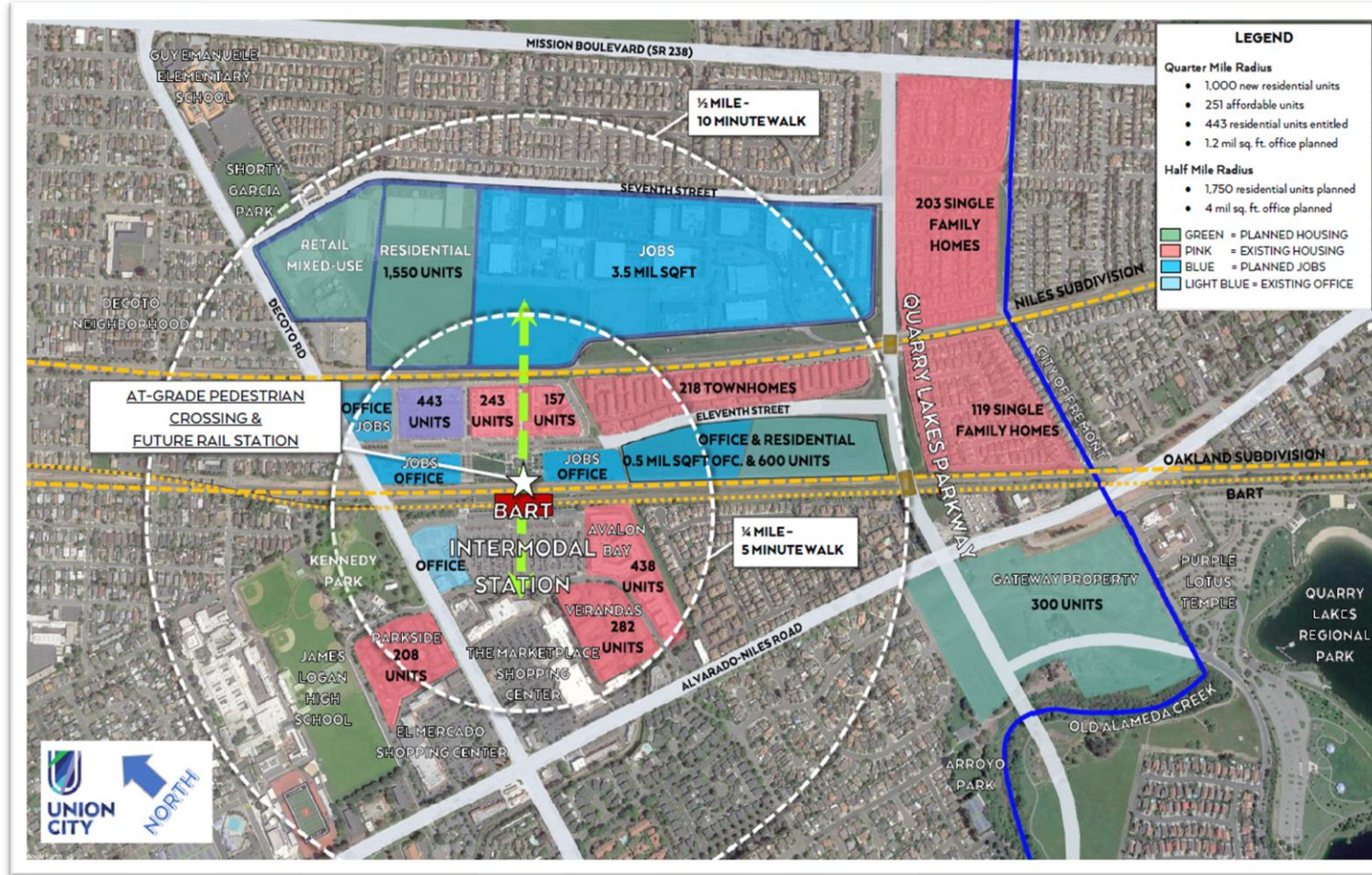


# First Amendment to Consulting Service Agreement with Mark Thomas & Company, Inc. for Final Design of Phases 1 and 2 for Quarry Lakes Parkway (East West Connector)

Joan Malloy, City Manager

Item 7a. - November 22, 2022

# Quarry Lakes Parkway - Overview



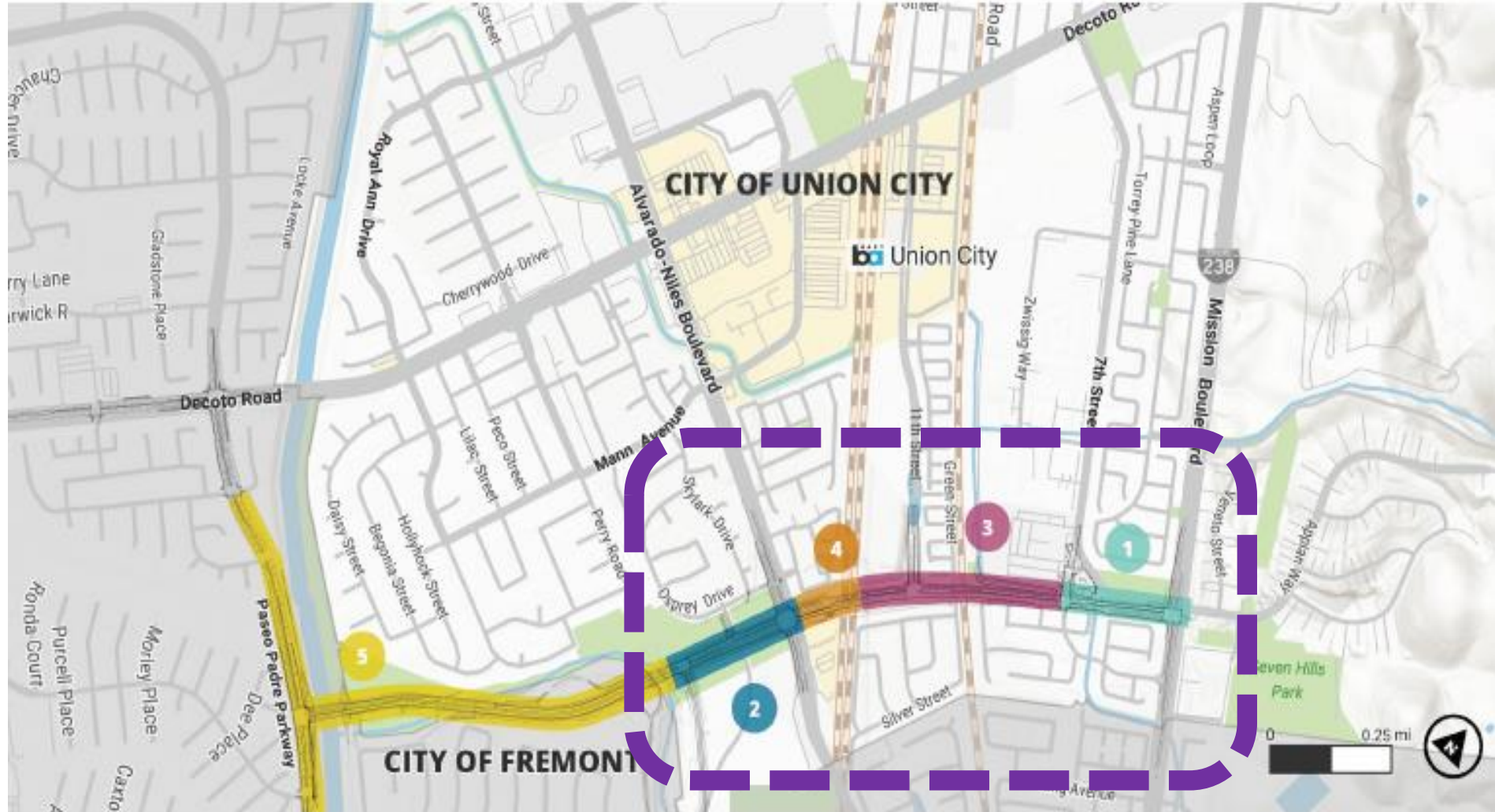
- Backbone Infrastructure for Build-Out of Station District
- 2,000 Housing Units
- Multimodal Opportunities
  - Bike Connectivity
  - Enhances transit service
  - Supports future ACE Rail Station



# | Quarry Lakes Parkway (Union City) Decoto Complete Streets (Fremont)



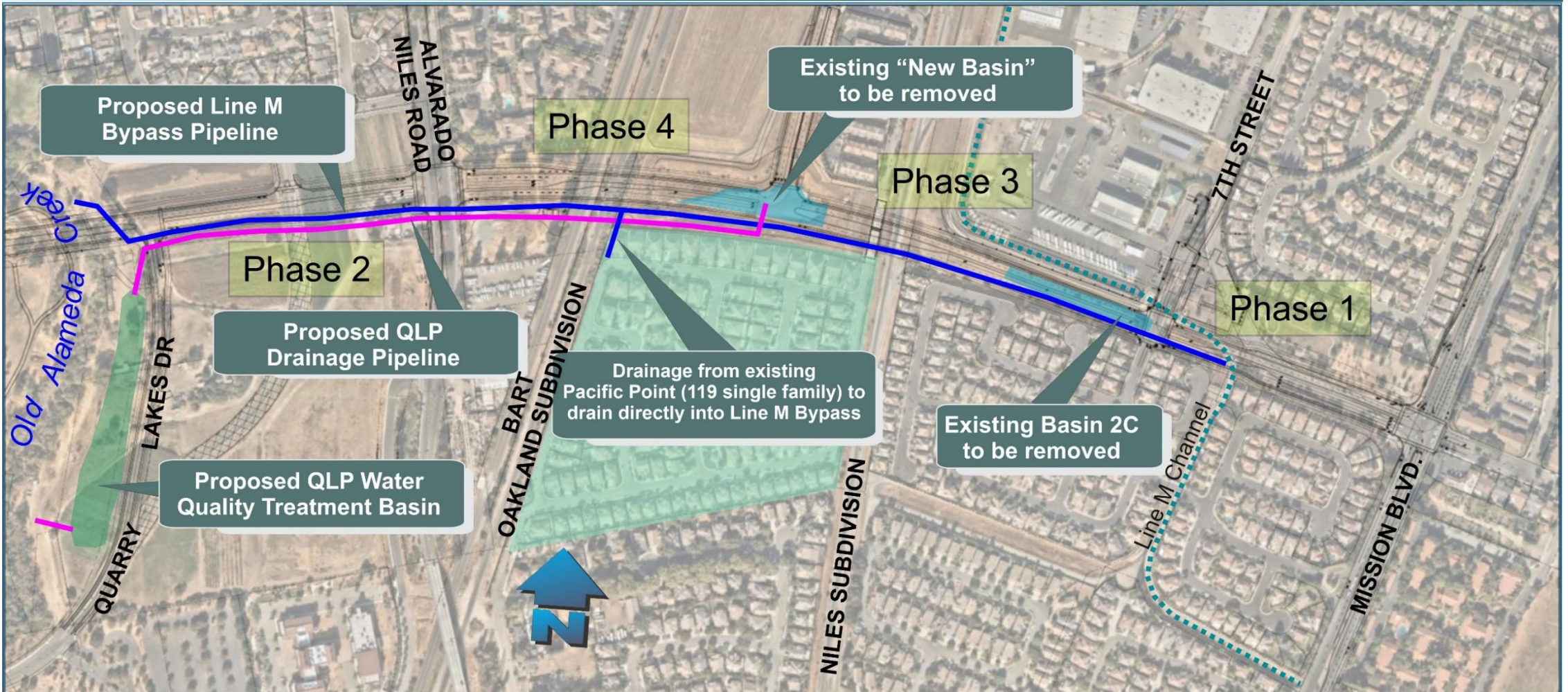
# Quarry Lakes Parkway, Phases 1-4





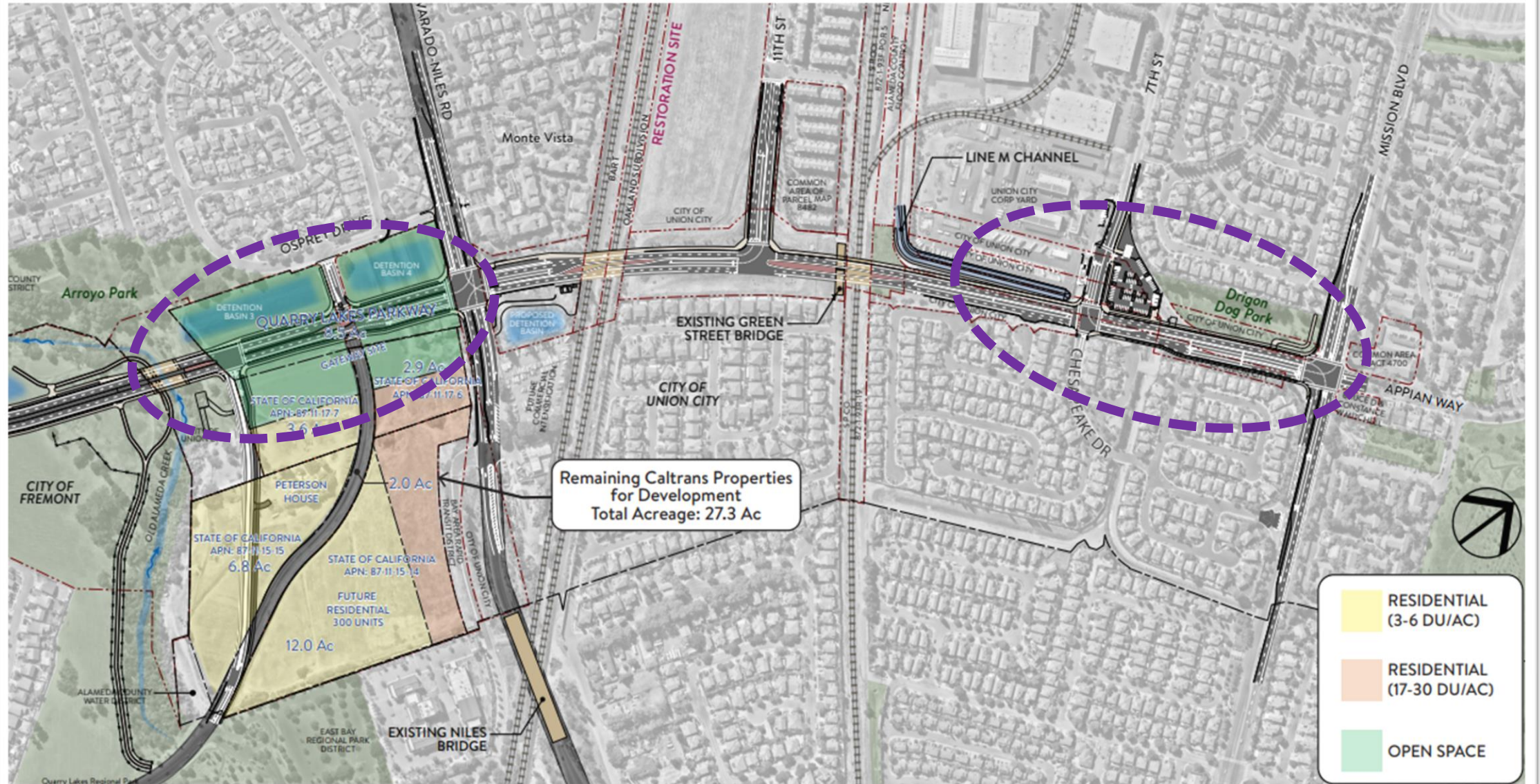
# East West Connector (Quarry Lakes Parkway) Drainage System

## QUARRY LAKES PARKWAY - REDESIGN OF STORM DRAINAGE SYSTEM





# Quarry Lakes Parkway, Phases 1 & 2





# | Quarry Lakes Parkway

## Alameda CTC Project Funding Agreement #A22-0053

**Nov. 2020:** Alameda CTC Commission **approves** allocation of \$4.2M for final design of QLP, Phases 1 and 2.

**Sept./Oct. 2021:** City Council **executes and accepts** Project Funding Agreement (PFA) A22-0053 for \$4.2 million for Final Design of QLP, Phases 1 and 2

**Jan. 2022:** City Council **awards** Consulting Service Agreement with **Mark Thomas & Company**, Inc. for Final Design (30% Design) for QLP, Phases 1 and 2 for \$1.2M (\$3M remaining)



# | Quarry Lakes Parkway

## Phases 1 and 2 Design Status Update

### **COMPLETE STREETS-MULTIMODAL DESIGN**

- Updated Plans to latest standards for bicycle, trails/sidewalk, ADA and transit.
- Coordinated with BPAC, Fremont, BART, AC Transit

### **ROADWAY DRAINAGE STRATEGY AND DESIGN**

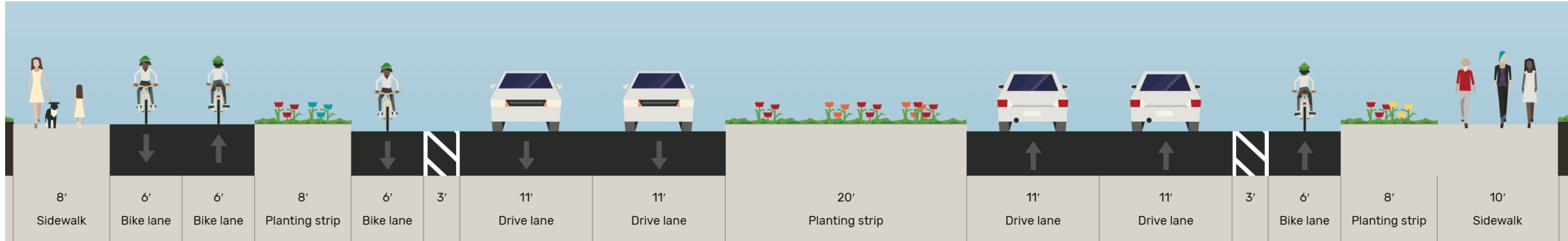
- Redesigned roadway drainage, Old Alameda Creek outfall structures, Line M bypass
- Coordinated with ACFCD, other regulatory and permitting agencies

### **GATEWAY (CALTRANS PROPERTY) DEVELOPMENT SITE**

- Refined geometric alignment and street sections for Quarry Lakes Parkway, Quarry Lakes Drive
- Relocated water quality treatment basins for improved residential development site



# | Quarry Lakes Parkway – Right-of-Way Design



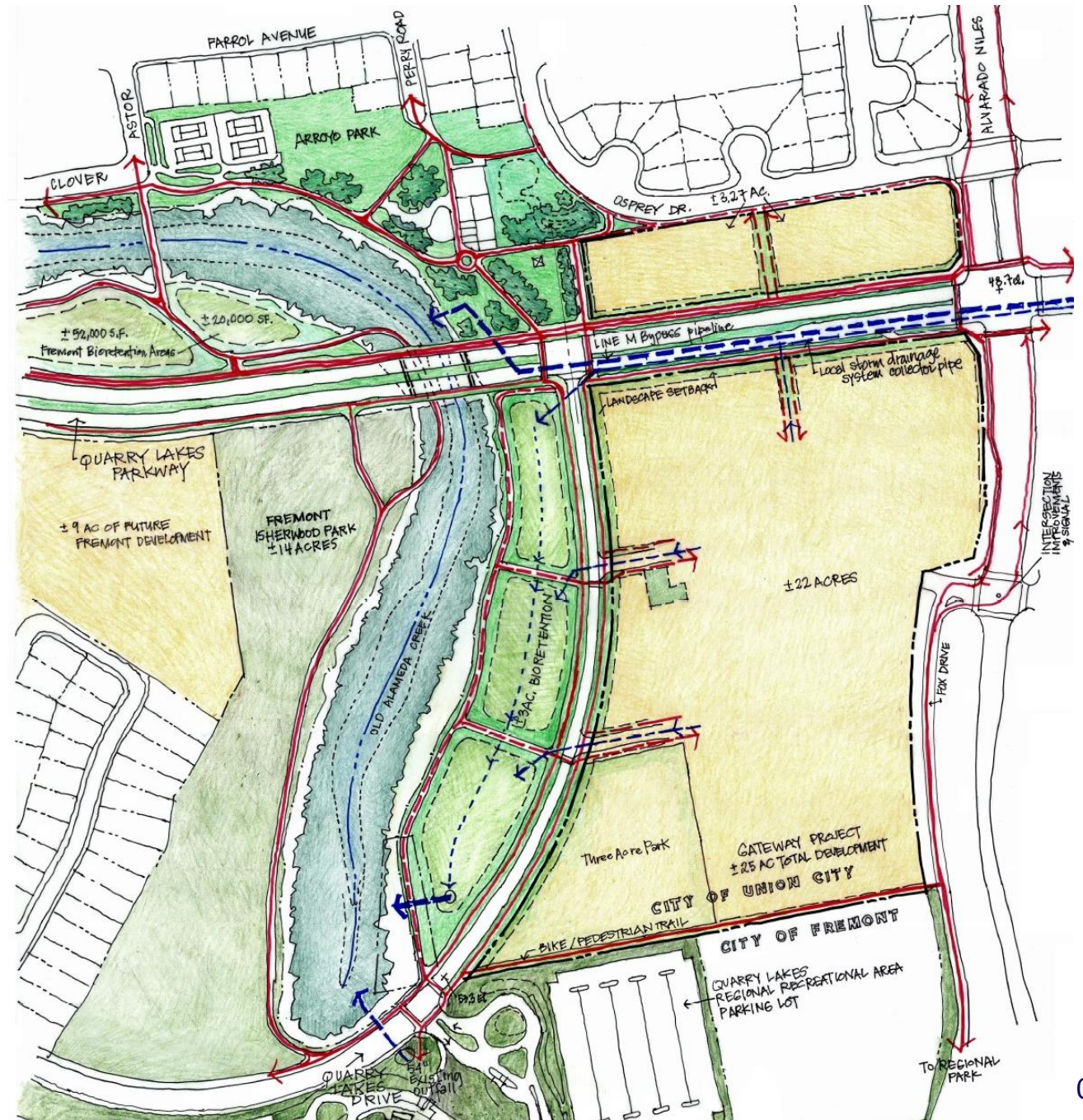
**Multimodal Corridor Design:** NACTO, Complete Streets Design

**Public Engagement:** City Council, BPAC, Bike Advocates

**Project Partners:** Alameda CTC, Fremont, AC Transit, BART, MTC, ACE, Alameda County Flood Control, East Bay Regional Park

# | QLP Drainage Plan

- Extend Line M Bypass Outfall north of QLP to Old Alameda Creek
- Relocated local stormwater collection/water quality treatment basins to upland of Old Alameda Creek
- Created Trail Systems connecting Open Space
- ***Opportunity for Creek Restoration***





# | Phase 1: 7th Street Connection (Mission Blvd to 7<sup>th</sup> Street)



Phase 1 Project Cost: **\$ 16.7 Million**

- Realign 7<sup>th</sup> Street along Corp Yard; connect to Chesapeake Dr.
- Install and modify utilities
- Modify and realign the Line M Channel
- Construct a new parking lot
- Supports Station East (Integral) Mixed-Used Development

## Phase 2- Gateway Connection (Gateway Site) (Old Alameda Creek to Alvarado-Niles Road)

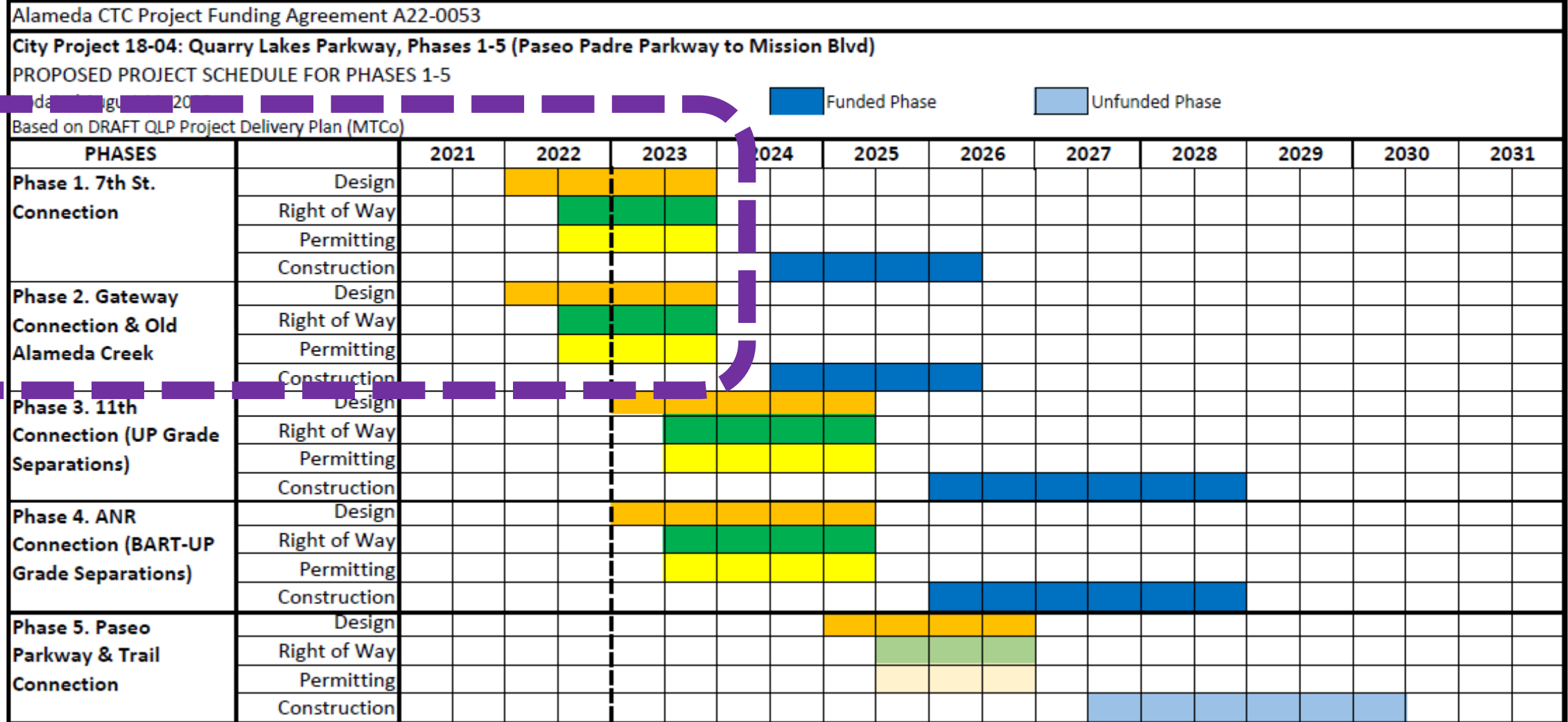


Phase 2 Project Cost: \$ **20.3 Million**

- Construct storm water quality treatment basin, outfall structures in Old Alameda Creek
- Realign existing Quarry Lakes Drive
- Install and modify utilities
- Install new traffic signal and street lighting
- Coordinate w/ City Ventures (Gateway Developer)



# Quarry Lakes Parkway - Timeline



## Recommendation

Adopt resolution authorizing the City Manager to execute the First Amendment to Consulting Service Agreement with Mark Thomas & Company, Inc. for Final Design of Phases (Segments) 1 and 2 of Quarry Lakes Parkway (East West Connector), City Project No. 18-04, in the amount of \$3,000,000 (totaling \$4.2 million).