



QUARRY LAKES PARKWAY

Presentation to Corps' Interagency Coordination

September 8, 2022

Seeking Concurrence on Key Aspects of Storm Water Management prior to Formal Permit Applications

- Extension of Line M Bypass Channel to outfall north of QLP to Old Alameda Creek
- Local stormwater collection system that brings water to upland bioretention water quality treatment areas to discharge into Old Alameda Creek
- Use of Old Alameda Creek for hydro-modification

Project Team will consult separately with agencies regarding mitigation for loss of federal and state waters/wetland.

| Quarry Lakes Parkway – September 8, 2022

Agenda:

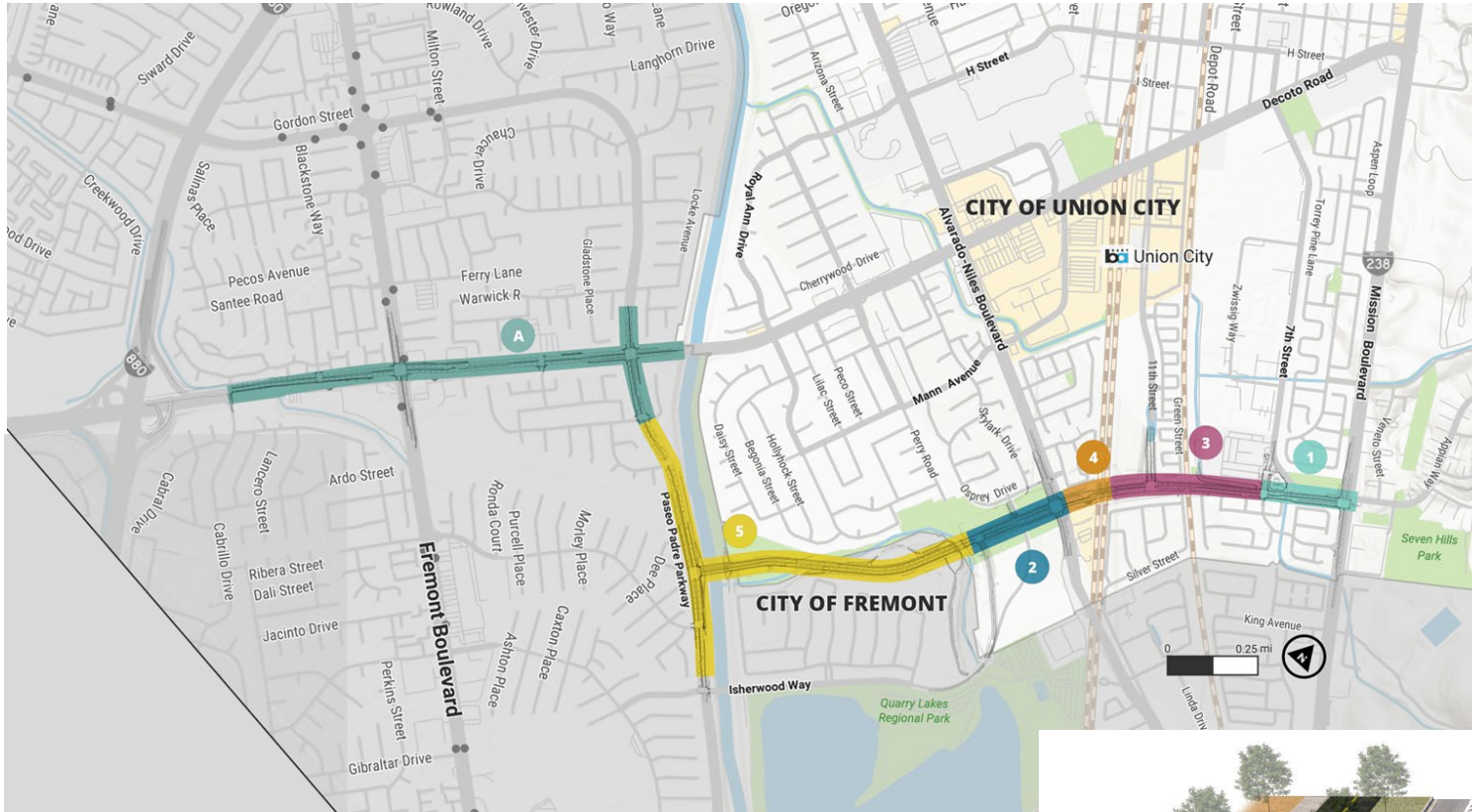
- General Project Overview and Design Status
- Quarry Lakes Parkway
- **Purpose of Meeting:** Elicit input on approach to stormwater treatment/ management and restoration of Old Alameda Creek
- **Basic Premise:** Old Alameda Creek need additional water to restore and enhance its riparian environment



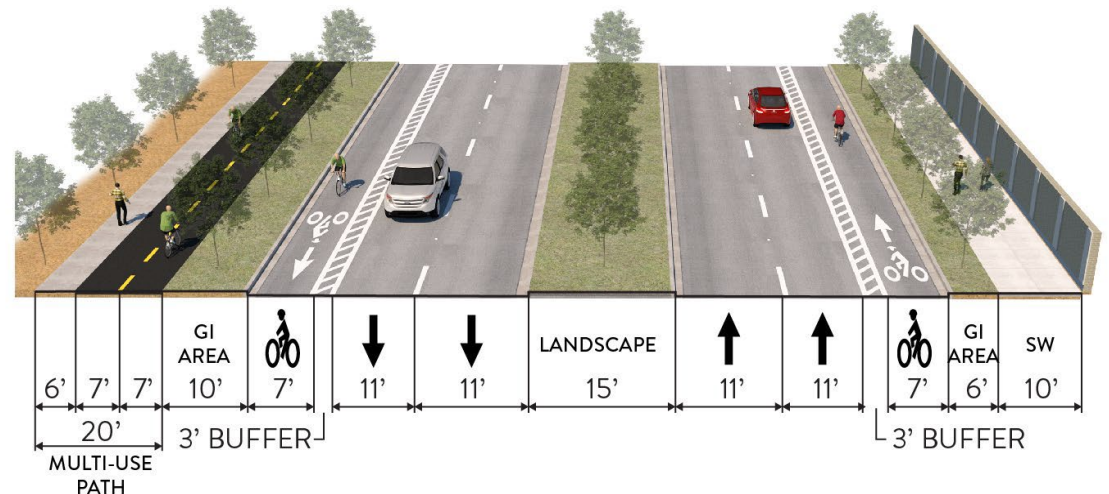
| Project Overview and Design Status

- Former Alameda CTC East-West Connector (EWC) Project – Corps File No. 2008-00012
- Environmental Approval with 2009 East-West Connector EIR (ACTIA)
- Preliminary permit discussions with USACE, USFWS, RWQCB, and CDFW regarding EWC from 2011 to 2016
- EWC Design Team prepared 65% 2011 EWC Plans and Project put on-hold
- In 2018, ACTC transferred ownership of the project to Cities of Union City and Fremont
- Union City renamed the project – Quarry Lakes Parkway
- In 2021, State transferred the 30 acre parcel to Union City
- Fremont: **Decoto Complete Streets**, Phases A & B (2018)
- Union City: **Quarry Lakes Parkway (QLP)**, Phases 1-5 (2018)
- EWC redesigned to meet local multimodal & complete street designs
- QLP footprint within the approved EWC Environmental Document

Quarry Lakes Parkway Phasing Plan



- Decoto, Phase A
90% Design Status
- QLP, Phases 1 & 2
35% Design Status
- QLP, Phases 3 & 4
(Consultant late 2022)
- QLP, Phase 5
Future



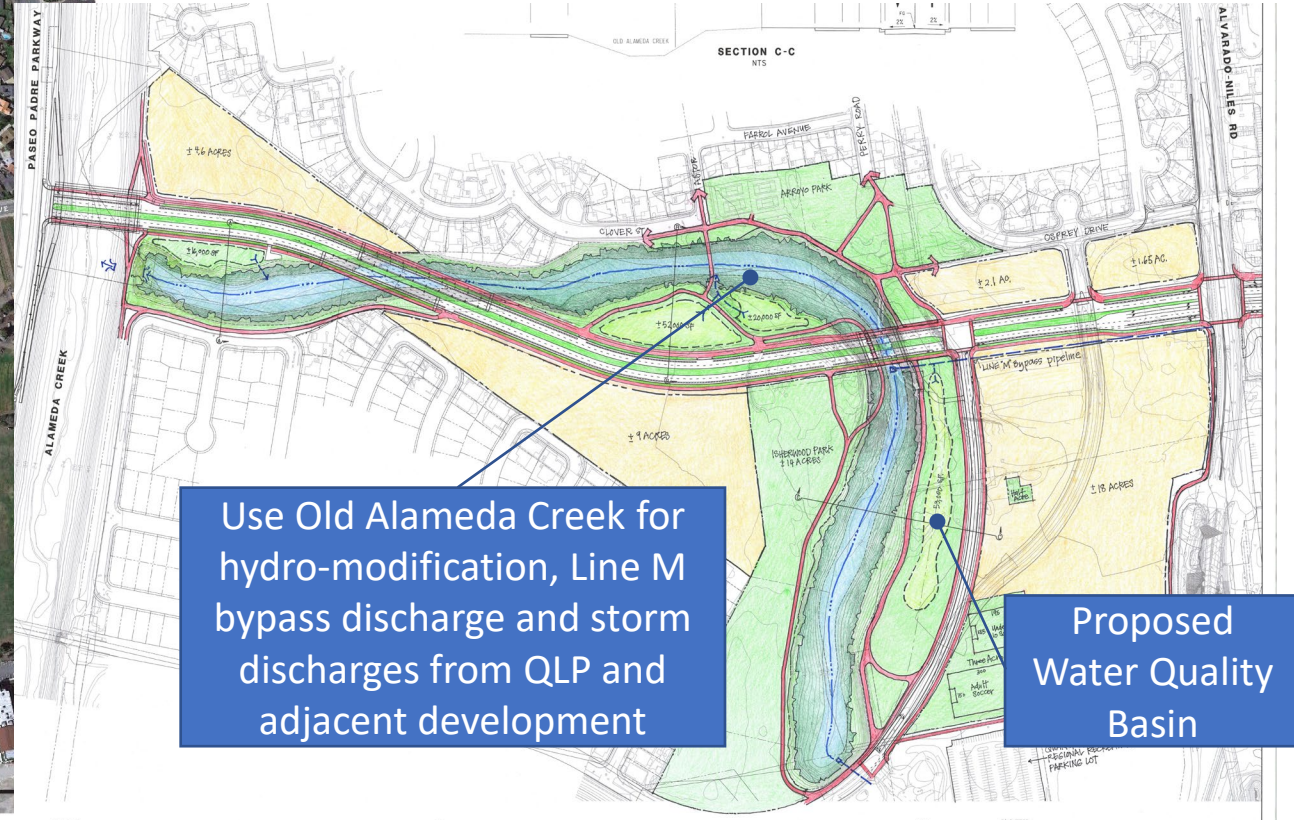
| Quarry Lakes Parkway Redesign Approach



| Drainage Design

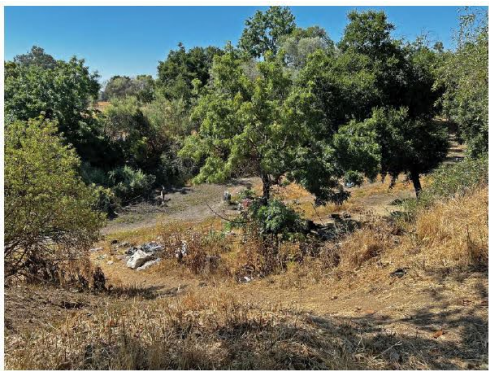


Existing Aerial View

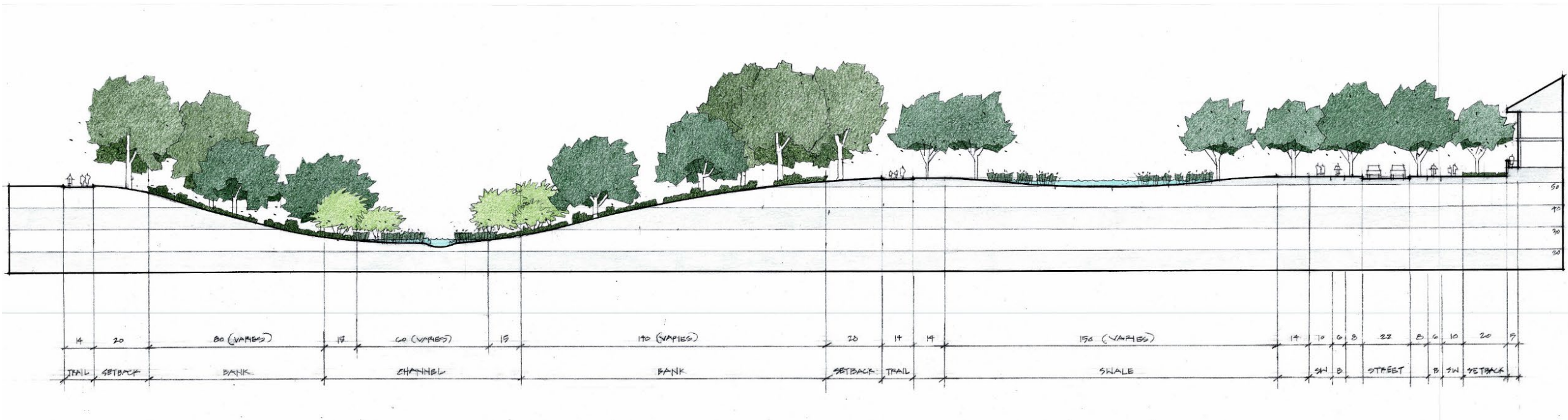


Old Alameda Creek Vision

| Old Alameda Creek Existing Conditions



| Old Alameda Creek Cross Section



| Potential Effects to Biological Resources



Plant Community

- Coyote Brush Scrub
- Herbaceous Wetland
- Non-native Annual Grassland
- Willow Riparian and Woodland Scrub
- Urban Landscaping

- Project Limits
- Detention Basin
- Construction Staging Area
- Mitigation Area

Data Source:

Final Environmental Impact Report
(SCH#2007102078)
Section 3.3 "Biological Resources"
Dated: April 2009

- Potential disturbance to California Red-Legged Frogs, California Tiger Salamanders and Western Pond Turtle
- Potential Loss of Nesting Migratory Birds
- Temporary or permanent Loss of Willow Riparian Woodland and Shrub

| Historic Resources



Peterson House from driveway, north elevation, facing south

- Previously CEQA Clearance only
- Historic Peterson Farm, adjacent but not physically affected by the project
- Federal compliance to Section 106 of NHPA because of federal agencies' permitting

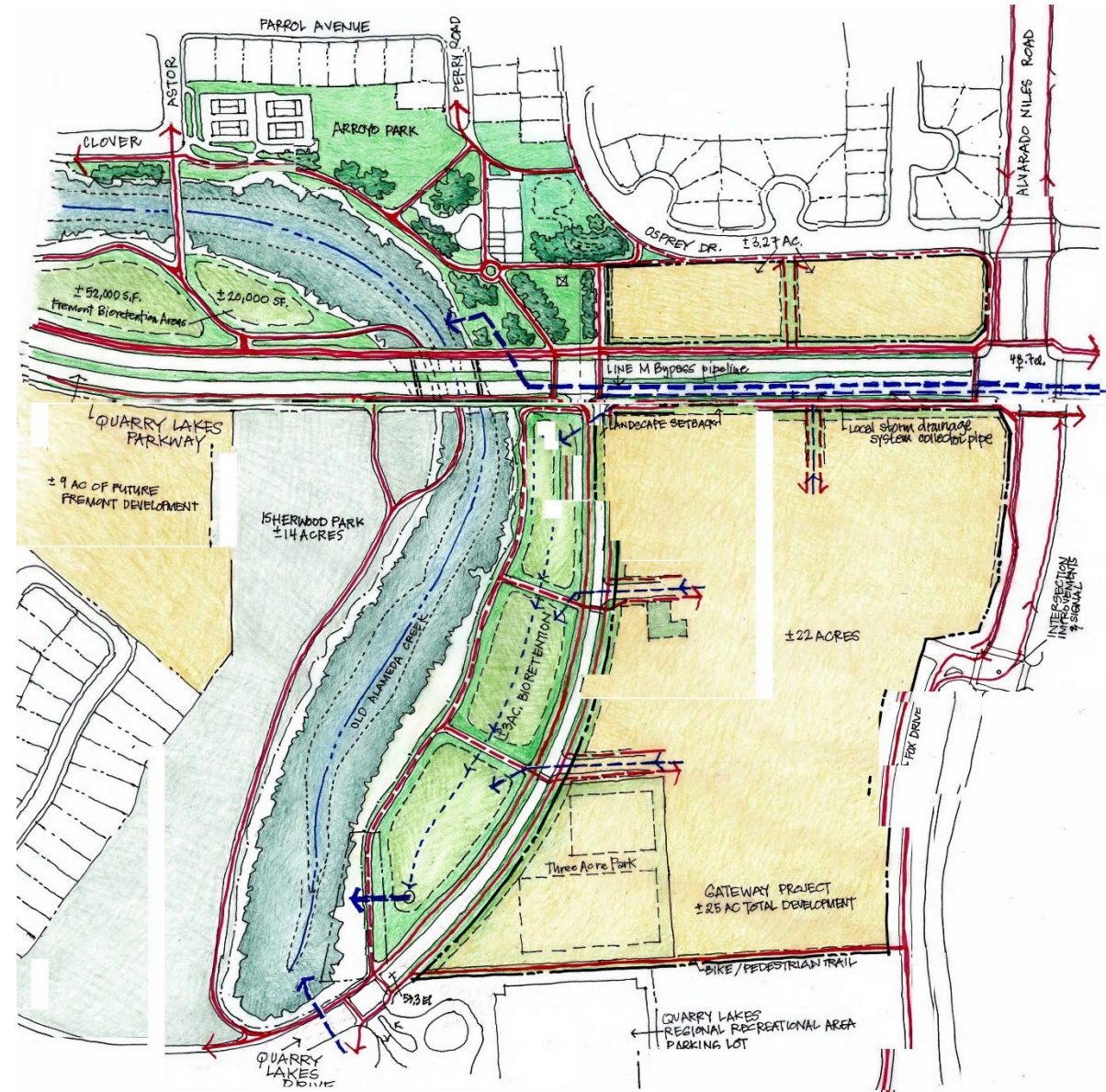


| Permit Requirements

- Corps Section 404 Clean Water Act for Phases 1-4
 - Basin 2C
 - Line M
 - Old Alameda Creek outfalls
 - Old Alameda Creek restoration (if fill involved)
- Consultation with U.S. Fish and Wildlife Service (Section 7) re: California red-legged frog and California tiger salamander
- Consultation with State Historic Preservation Officer (Section 106)
- California Department of Fish & Wildlife – Section 1602 Streambed Alteration Agreement Documentation (Line M and Old Alameda Creek)
- California Department of Fish & Wildlife – Section 2081 Incidental Take Permit (California Tiger Salamander)
- Regional Water Quality Control Board – Section 401 Water Quality Certification/Waste Discharge Requirements (Basin 2C, Line M, New Basin and Old Alameda Creek)
- SF Bay Area Air Quality Management District Demolition Permit (Silva farmhouse complex)₁₂

| City's Vision for QLP and Old Alameda Creek

- Promote safe, efficient, and convenient multimodal travel corridor to achieve beneficial public life, neighborhood livability and economic vitality
- Joint planning process
 - Flood control facility
 - Support future affordable housing
 - Enhance natural resources
 - Open space and recreation opportunities
 - Complete trail connectivity



Seeking Concurrence on Key Aspects of Storm Water Management prior to Formal Permit Applications

- Extension of Line M Bypass Channel to outfall north of QLP to Old Alameda Creek
- Local stormwater collection system that brings water to upland bioretention water quality treatment areas to discharge into Old Alameda Creek
- Use of Old Alameda Creek for hydro-modification

QUESTIONS?