



# City Council Study Session Quarry Lakes Parkway

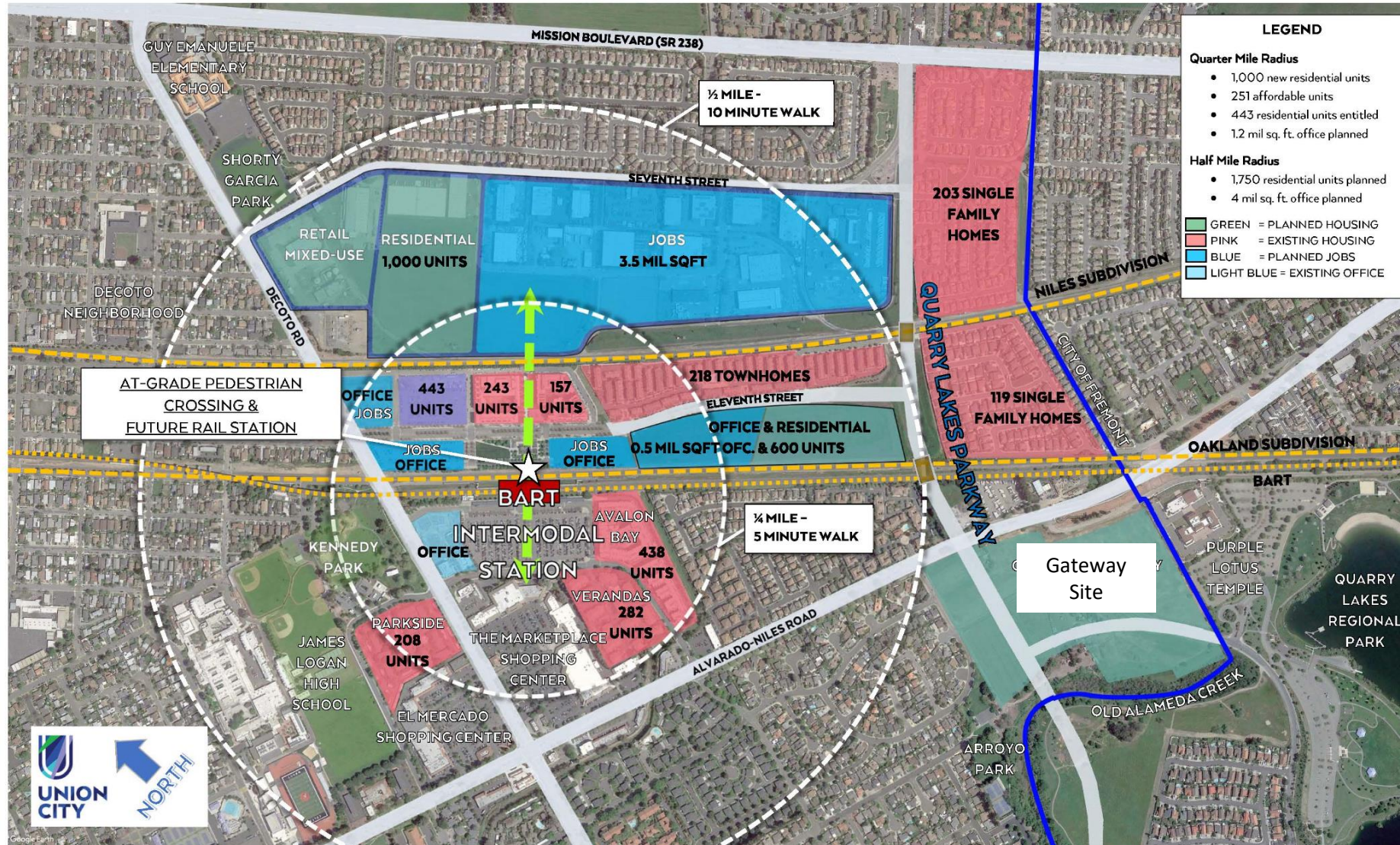
July 12, 2022

## Structure of Presentation:

- Background
- QLP Description, Phases and Timing
- QLP Cost and Funding Sources
- Programming LATIP and ACTC funds
- Decoto Complete Streets
- Old Alameda Creek Enhancement Vision and Meetings with Regulatory Agencies and Partners
- City Ventures Update
- BART East Entrance (At-grade Crossing)
- Coordination with MTC and ACE for Union City Station



# Quarry Lakes Parkway Study Session – July 12, 2022



## Background 2018:

- Alameda CTC made Union City Lead Agency March 15, 2018
- Granted Union City \$2.5 million to:
  - Complete design work (EWC Connector Segments B, C & D)
  - Secure regulatory permits
  - Evaluate need for additional environmental work
  - Prepare a traffic analysis
  - Work with transit, pedestrian, and bicycle groups to ensure QLP is designed to meet interests of groups
  - Submit updated cost estimate
  - Report back upon completion of design work



## Background 2018:

- Alameda CTC provided Union City
    - 65% drawings (EWC, Segment B, C & D)
    - Limited documentation to secure permits – no permits secured
    - \$2.5 million to prepare 100% construction documents/bid package
- 
- Inadequate funding to complete work
  - City Manager briefed Alameda CTC November 19, 2020

### PERMITS

- Union Pacific
- RWQCB
- Cal Fish and Wildlife
- Nat. Marine Fisheries
- Army Corp of Eng.
- ACFCWCD
- BART

## Alameda CTC 2020 Presentation:

- Transportation Memo prepared by Kittleson Associates:
  - Supported adopted land use plans
  - Reduced Vehicle Hours Traveled and Vehicle Miles Traveled
  - Enhanced transit services, pedestrian and bicycle safety
  - Aligns with Bay Area 2050
  - Improved traffic circulation to and from Station District
  - Consistent with EIR
- Legal documentation Certified EIR adequate for QLP

## Alameda CTC 2020 Presentation:

- Meetings with other agencies and partners
- Phasing design and construction plan for QLP and updated costs

### Partners and Agencies

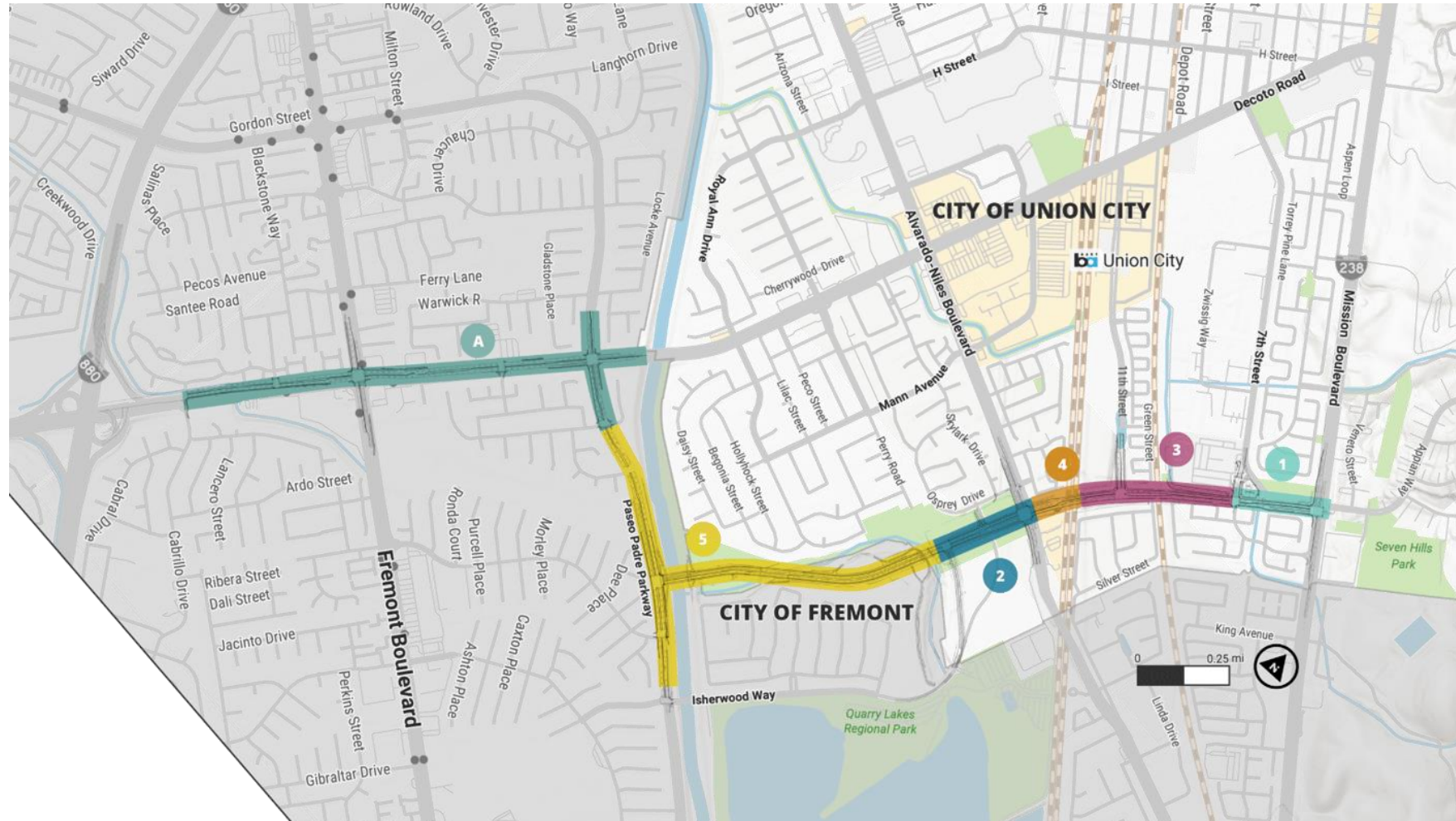
- AC Transit
- ACE
- BART
- Dumbarton Rail
- Bike East Bay
- Alameda CTC BPAC
- Union City BPAC
- EBRPD
- City of Fremont

## Alameda CTC Action:

- Adopted Resolution No. 20-013
  - Committed \$22 million from Measure BB to compete design Phases 1, 2, 3, and 4 upon submission of full funding plan
  - Convene meetings with Fremont, and AC Transit to evaluate potential for transit priority lanes along Decoto Road
  - Employ design features along QLP for highest quality transit
  - Hold publicly noticed meetings with bicycle, pedestrian, and transit advocates on design elements of QLP



# Quarry Lakes Parkway Phases:



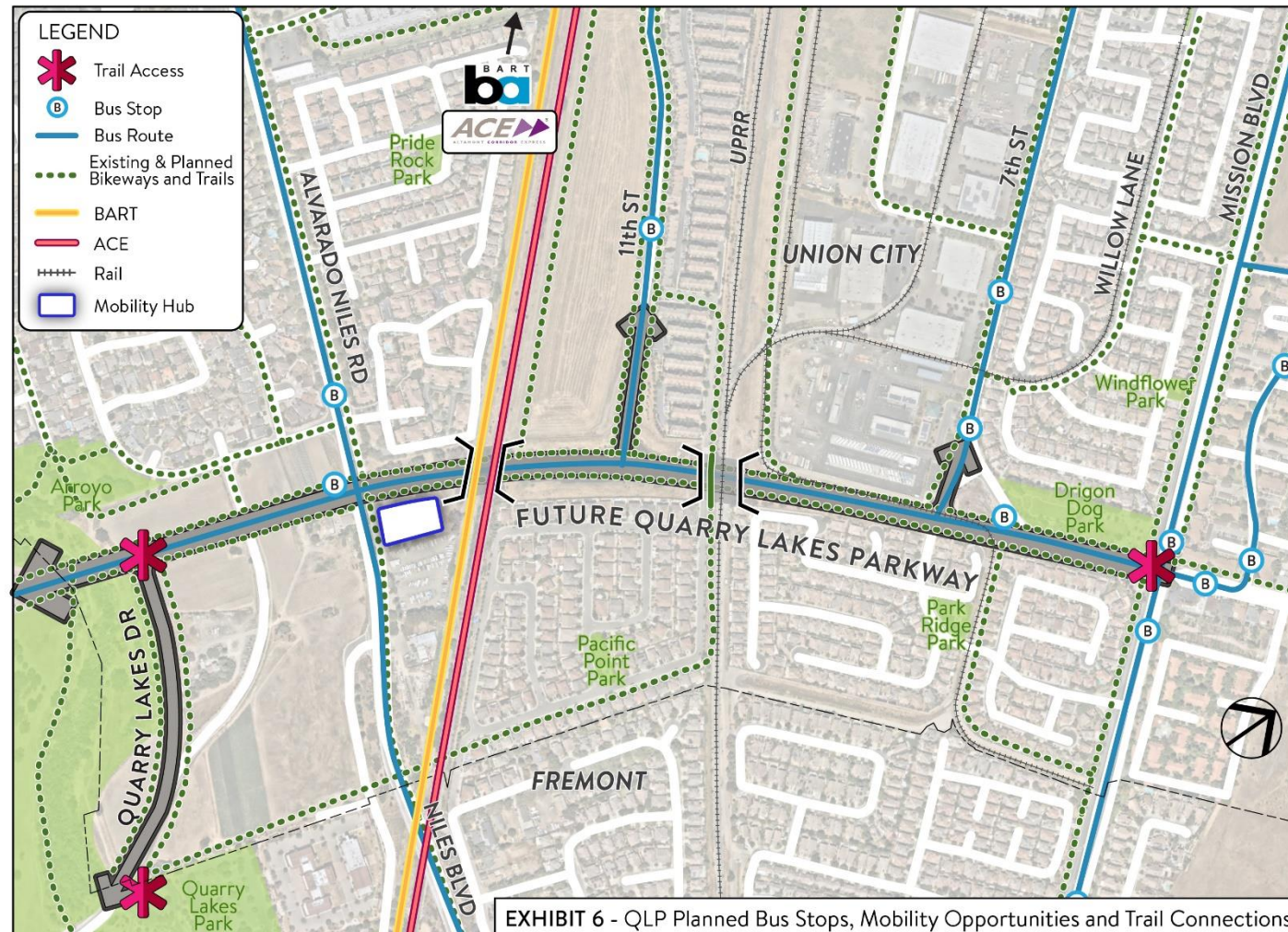


## Quarry Lakes Parkway Study Session – July 12, 2022





# Quarry Lakes Parkway: Connectivity



## Quarry Lakes Parkway Timeline:

City Project 18-04: Quarry Lakes Parkway & Decoto Complete Streets Project

**PROPOSED PROJECT SCHEDULE FOR QLP-PHASES**

Updated June 14, 2022

Based on DRAFT QLP Project Delivery Plan

Legend: ■ Funded Phase ■ Unfunded Phase

PHASES		2021	2022	2023	2024	2025	2026	2027	2028	2029	2030	2031	2032
<b>Phase 1 7th St. Connection</b>	Design		■	■	■								
	Right of Way		■	■	■								
	Permitting		■	■	■								
	Construction					■	■	■					
<b>Phase 2 Gateway Connection</b>	Design		■	■	■								
	Right of Way		■	■	■								
	Permitting		■	■	■								
	Construction					■	■	■					
<b>Phase 3 11th Connection (UP Grade Sep)</b>	Design		■	■	■	■							
	Right of Way			■	■	■	■						
	Permitting			■	■	■	■						
	Construction						■	■	■	■			
<b>Phase 4 ANR Connection (BART-UP Grade Sep)</b>	Design		■	■	■	■							
	Right of Way			■	■	■	■						
	Permitting			■	■	■	■						
	Construction						■	■	■	■			
<b>Phase 5 &amp; B Paseo &amp; Trail Connection</b>	Design					■	■	■					
	Right of Way					■	■	■					
	Permitting					■	■	■					
	Construction								■	■	■	■	
<b>Phase A Fremont- Decoto Complete</b>	Design	■	■	■									
	Right of Way	■	■	■									
	Permitting	■	■	■									
	Construction				■	■	■						

	Quarry Lakes Parkway Project Cost Phases 1-4
\$ 22.0 M	Design
\$ 18.7 M	Permits and Mitigation
\$ 145.6 M	Construction
\$ 21.7 M	Construction Management
\$208.1 M	Total



Phase 5	
\$ 5.9 M	Design
\$ 3.2 M	Permits and Mitigation
\$ 45.0 M	Construction
\$ 5.9 M	Construction Management
\$ 60.0 M	Total

## California Transportation Commission

Agreed to Program \$86,184,000 LATIP

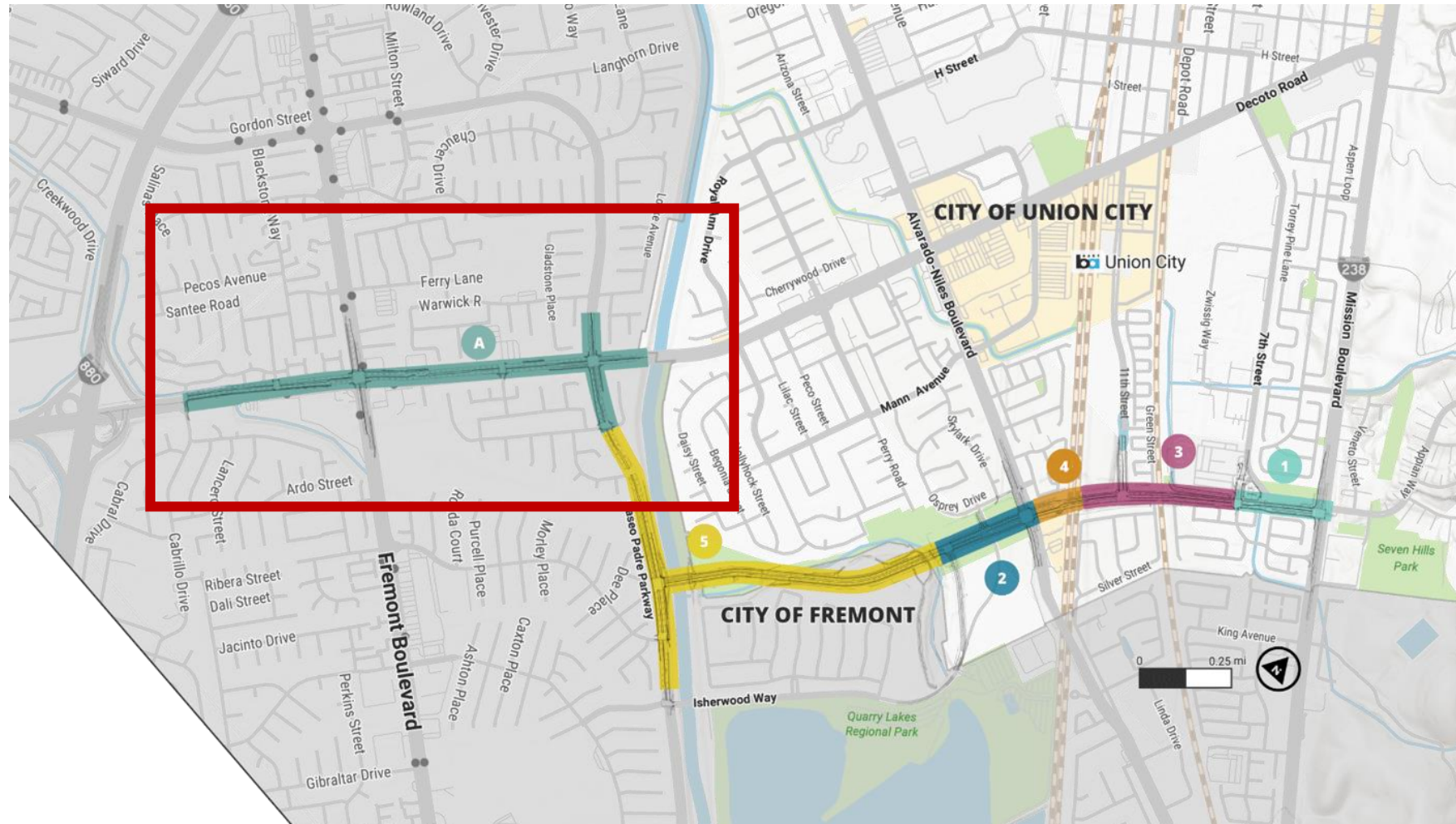
\$ 82,000 to \$ 400,000	Caltrans Administration
\$ 7,035,000	Santa Clara VTA: I-880/Mission Interchange BART
\$17,720,000	Fremont restoration of Historic Route 84
\$61,000,000	Approximate, Union City, East-West Connector

Funding Sources	
\$ 69 M	Measure B Funds
\$ 14.3 M	2005-CMA TIP (Transportation Improvement Program)
\$ 61 M	Union City share of LATIP
\$ 40 M	TEP 21 Dumbarton Corridor
\$ 72 M	TEP 22 Intermodal Station
\$256.3 M	<b>Total</b>

## **Alameda CTC Submission:**

- Full Funding Plan
- BPAC quarterly meeting documentation
- Documentation - Coordination with Fremont, AC Transit, BART, and MTC-ACE to ensure QLP will employ design features most compatible with transit

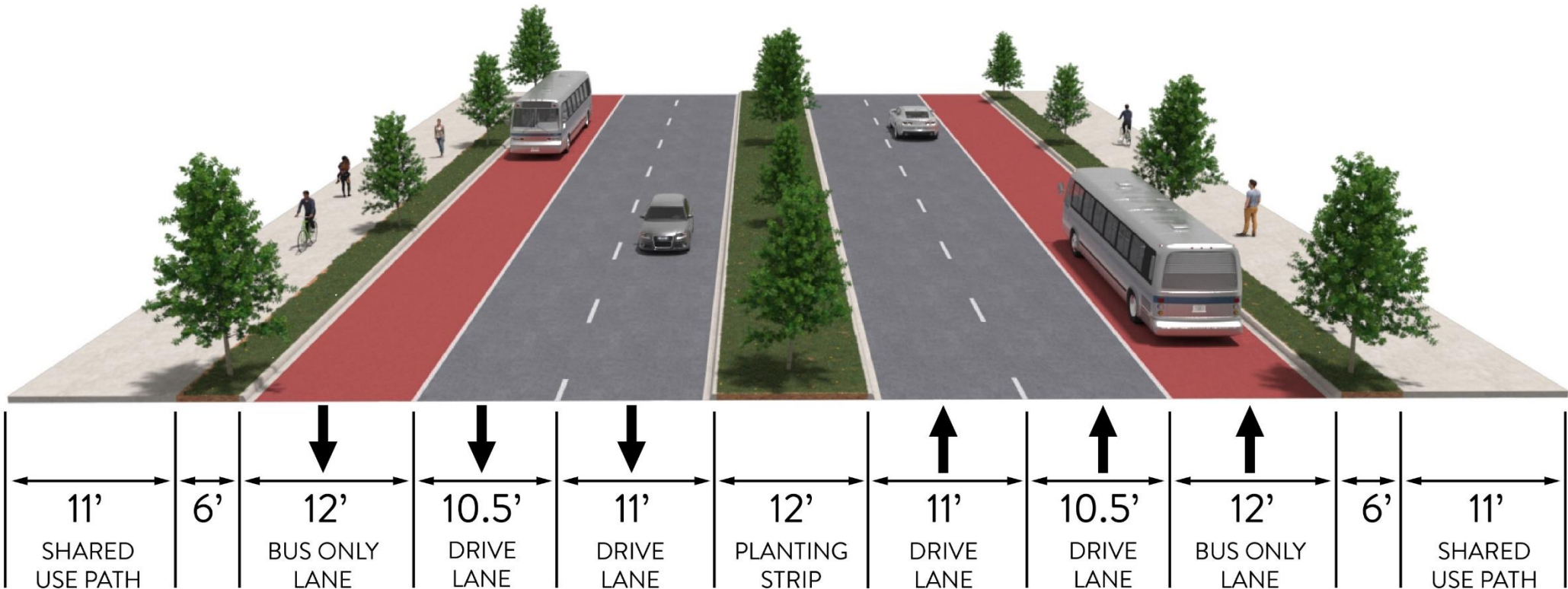
# Quarry Lakes Parkway Phases:



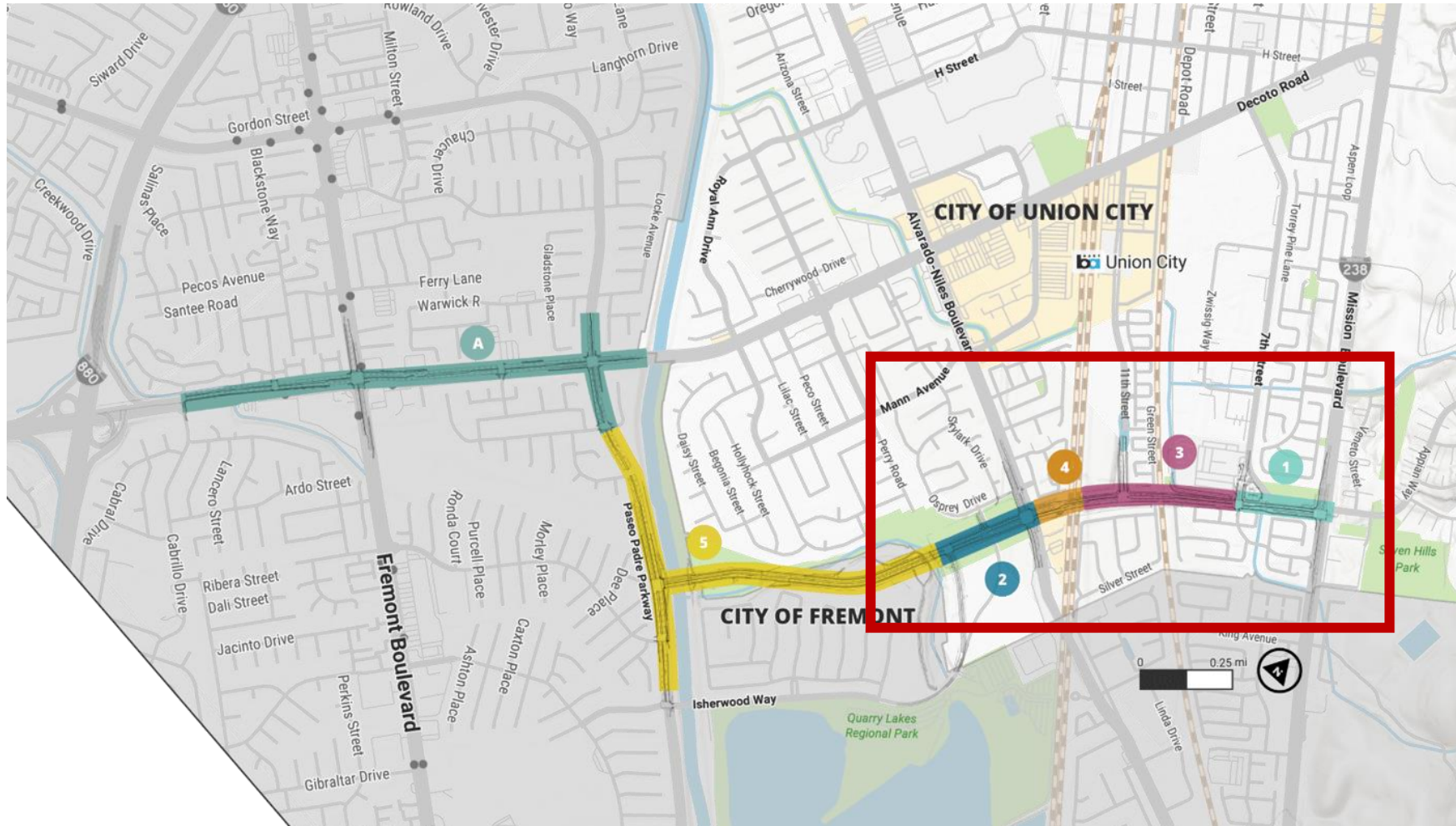


# QLP Phase A: Decoto Complete Streets

Fremont is lead agency



# Quarry Lakes Parkway Phases 1-4:



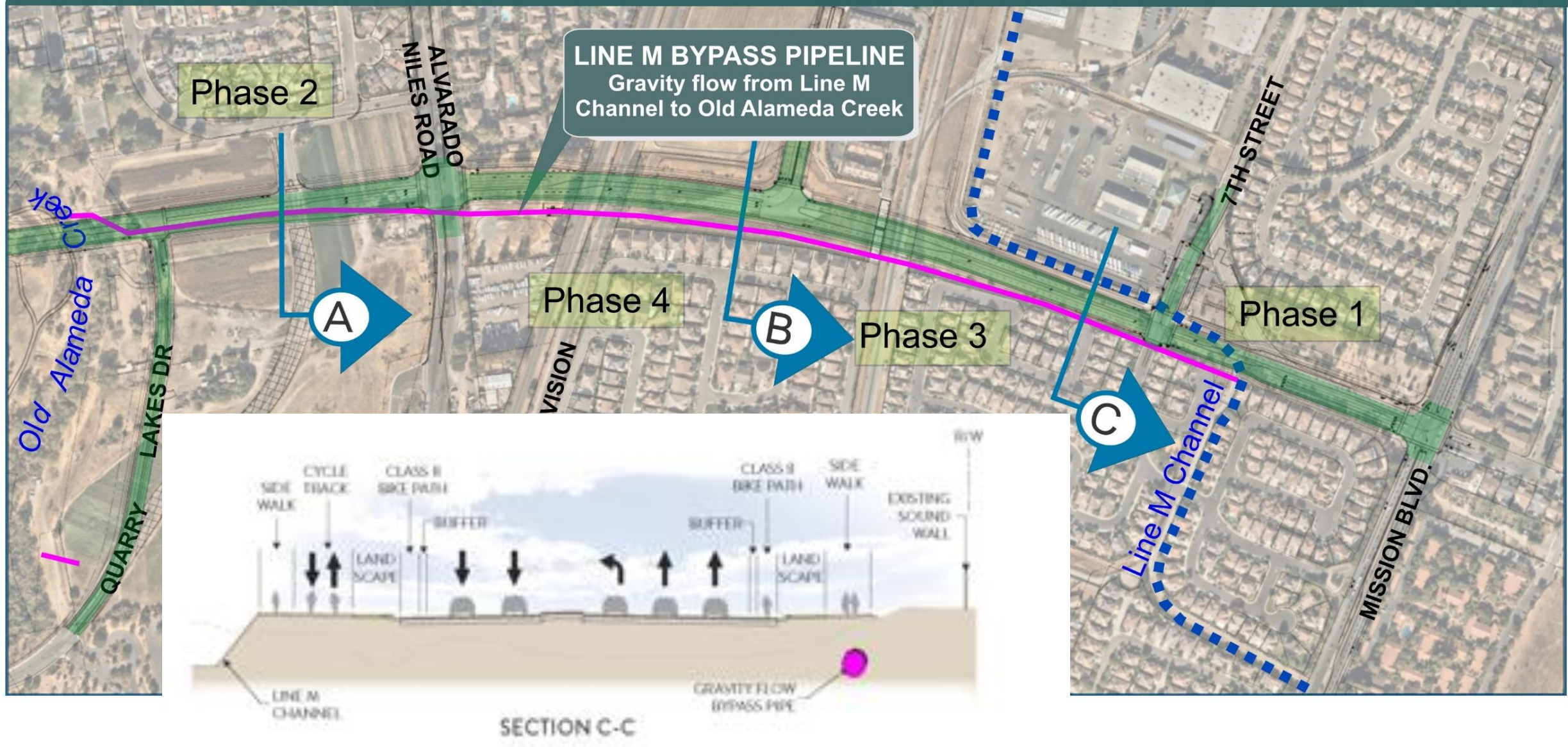


## QUARRY LAKES PARKWAY - REDESIGN OF STORM DRAINAGE SYSTEM



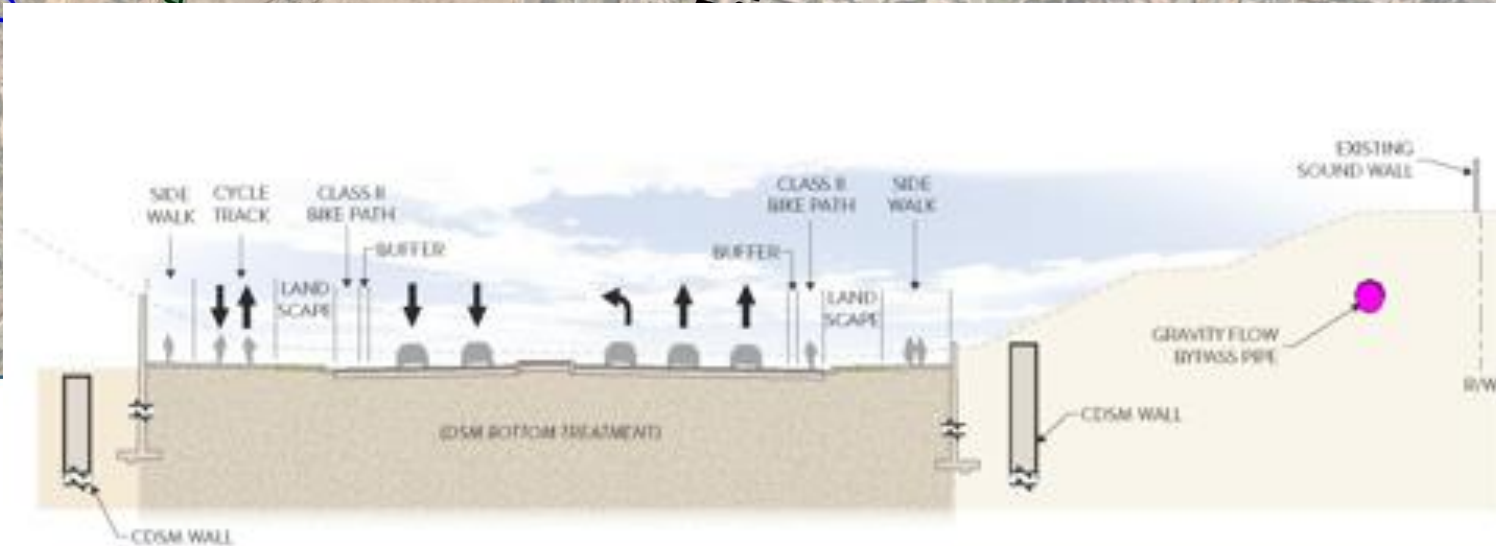
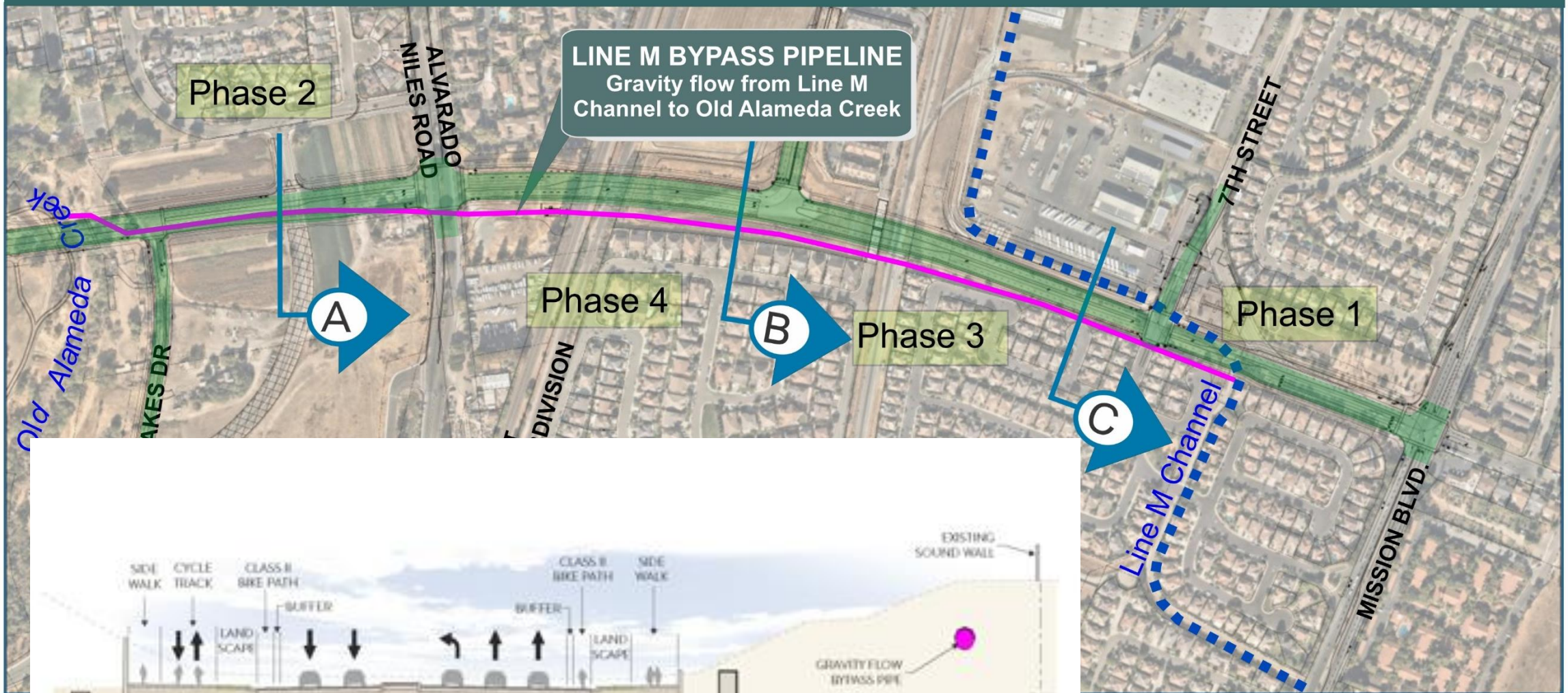


# QUARRY LAKES PARKWAY - LINE M SYSTEM





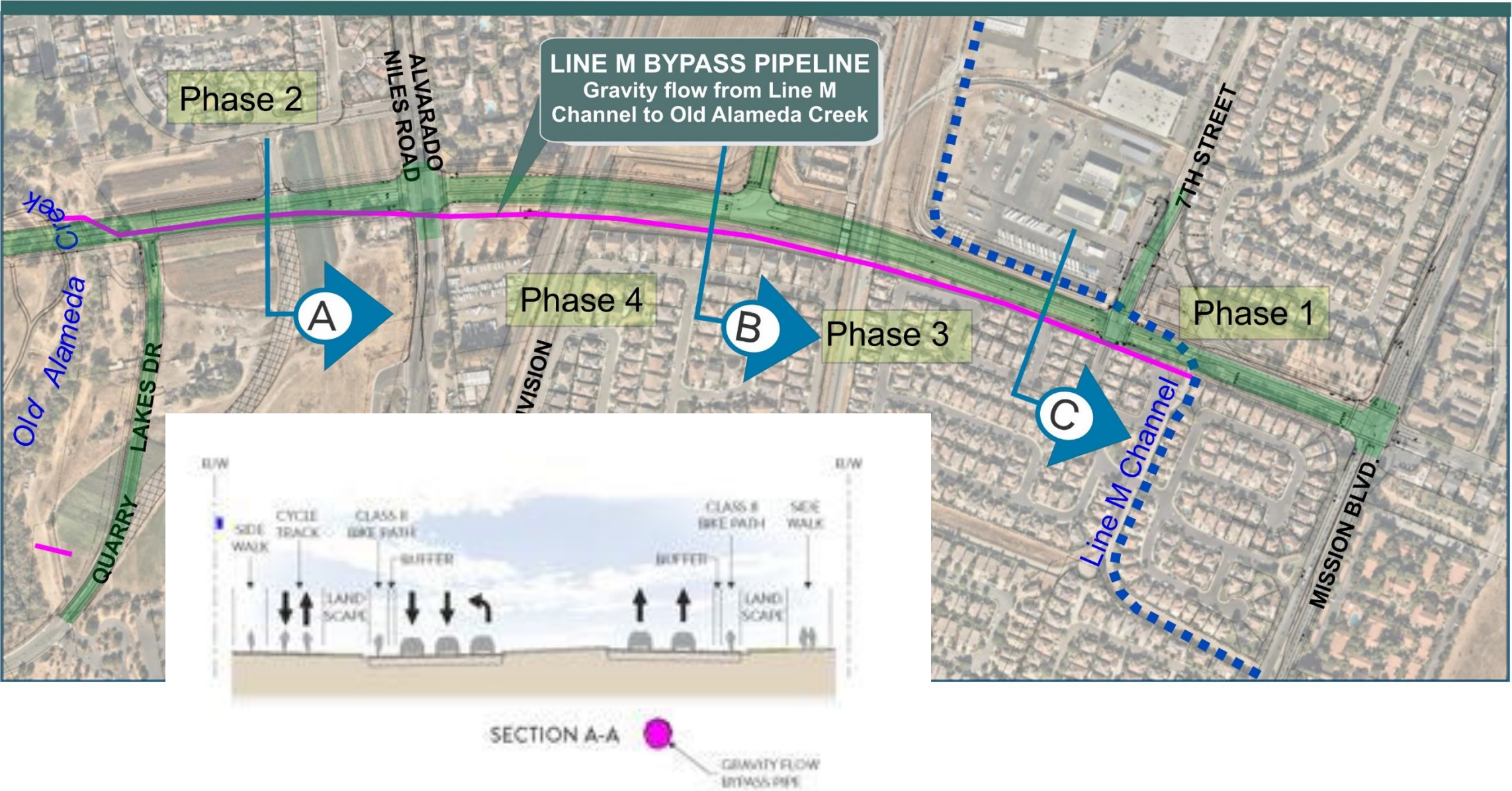
# QUARRY LAKES PARKWAY - LINE M SYSTEM



SECTION B-B

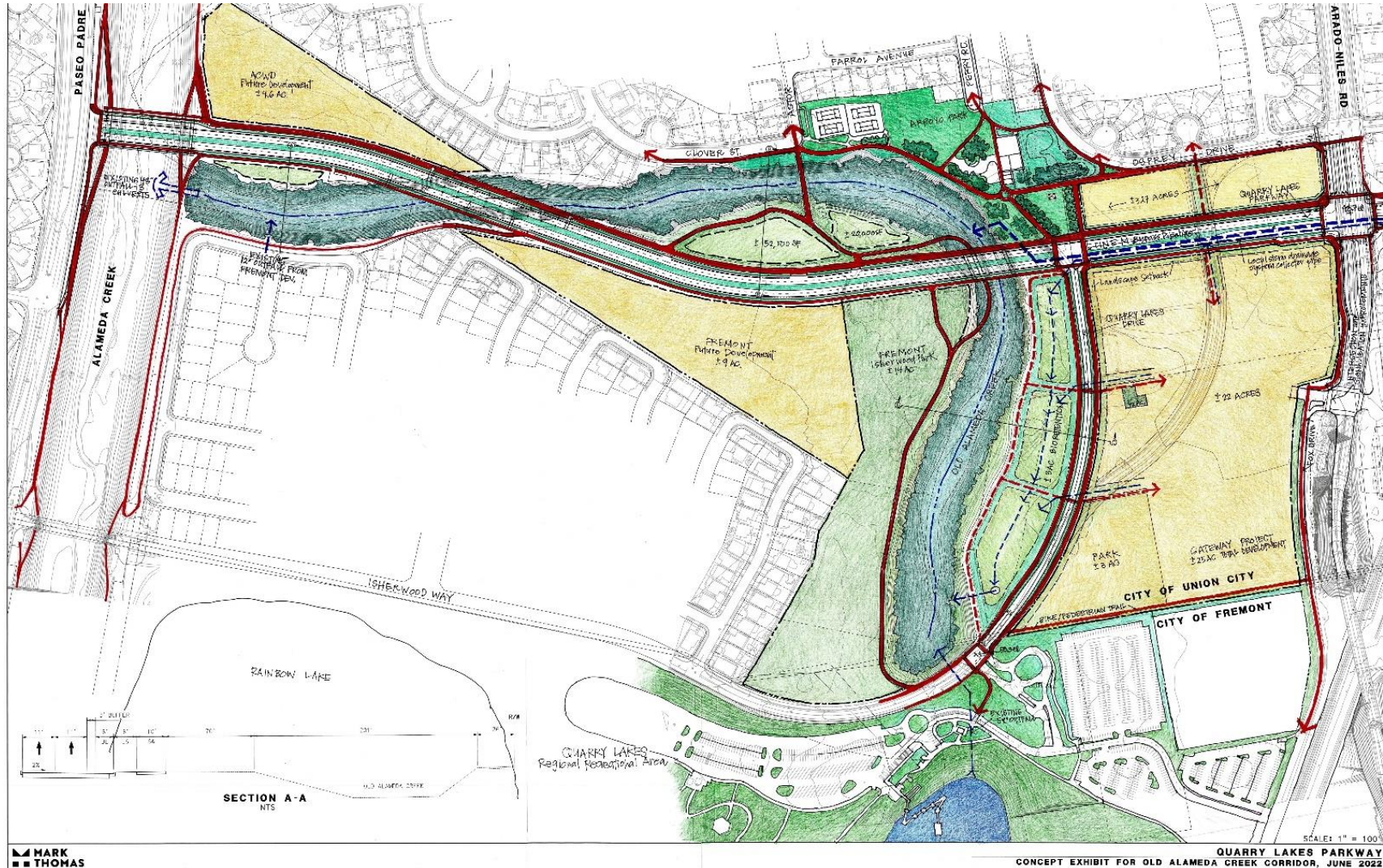


## QUARRY LAKES PARKWAY - LINE M SYSTEM





# Old Alameda Creek Restoration Vision

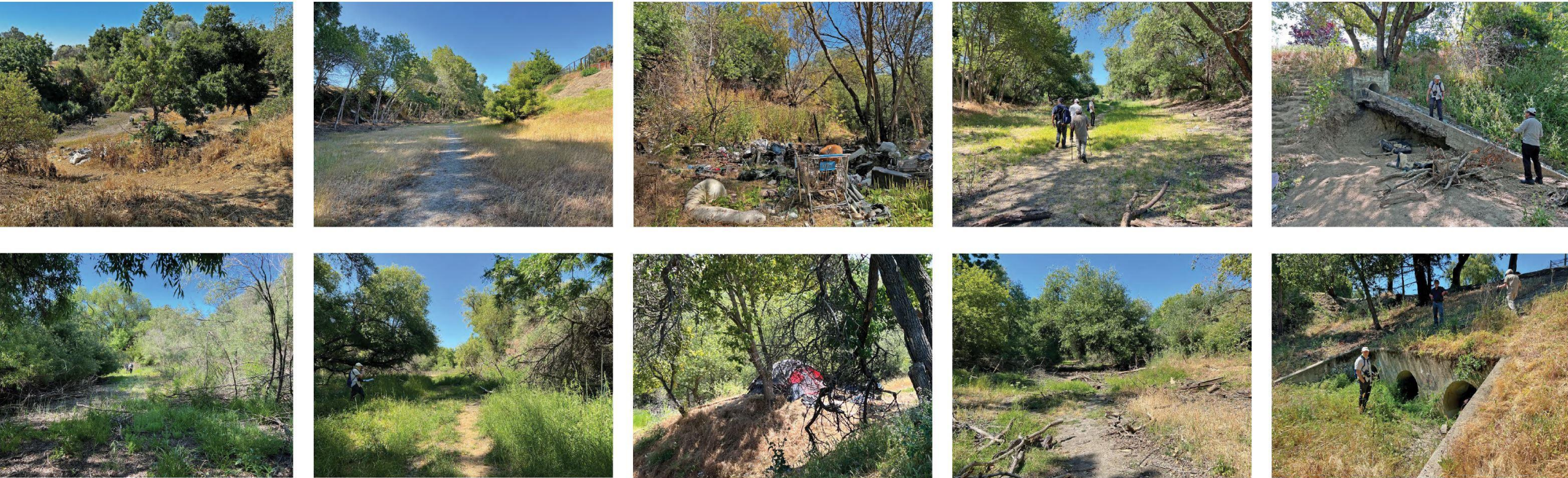








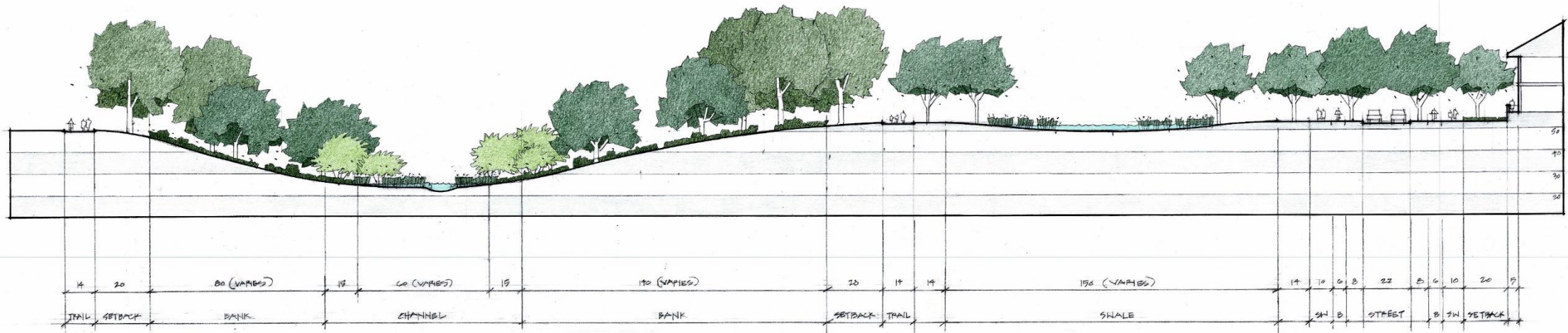
# Old Alameda Creek Existing Conditions



OLD ALAMEDA CREEK - EXISTING CONDITIONS



# Old Alameda Cross Section



OLD ALAMEDA CREEK CROSS SECTION.



# Bioretention Open Space Amenity

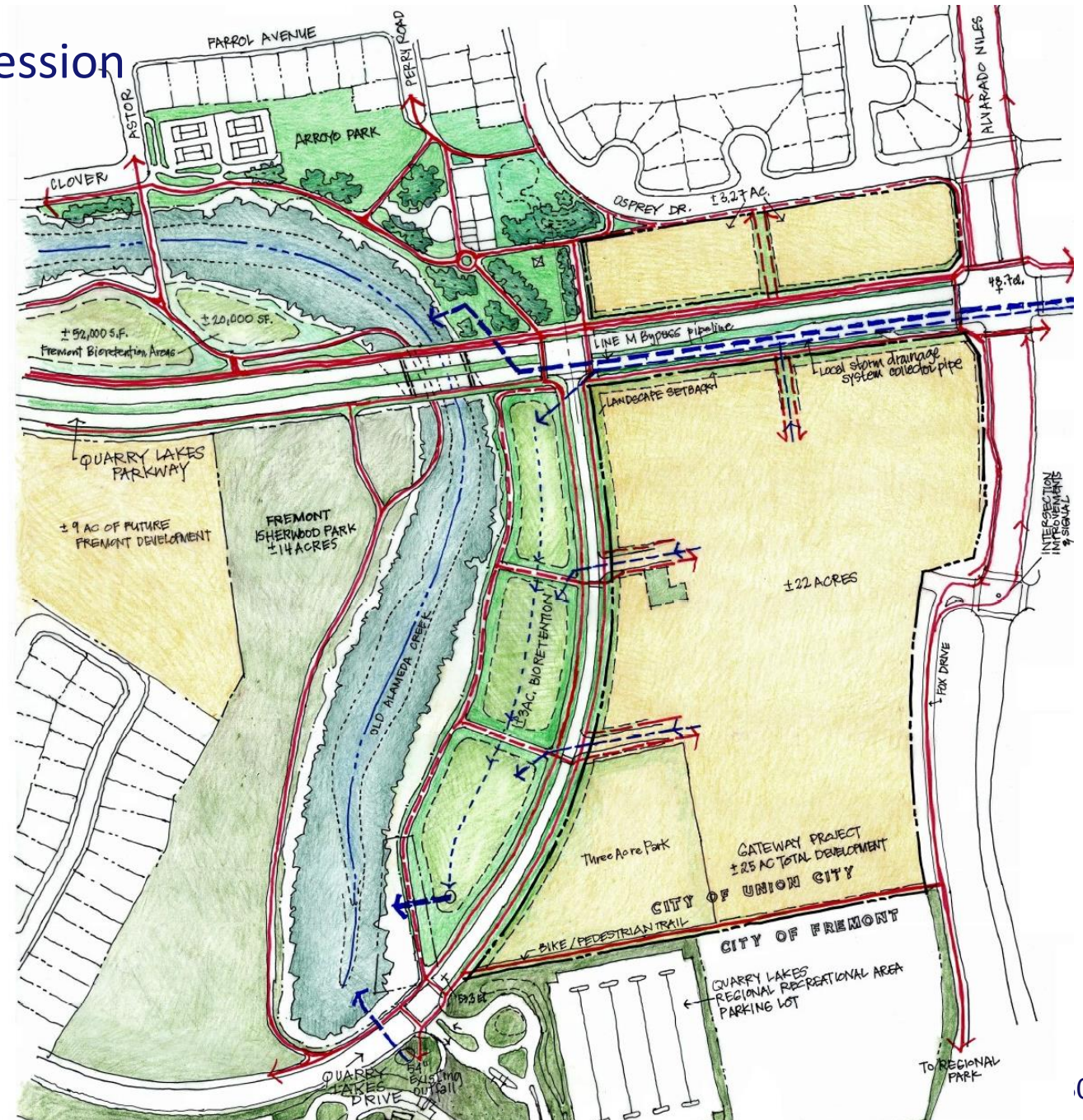


BIORETENTION AS A PARK

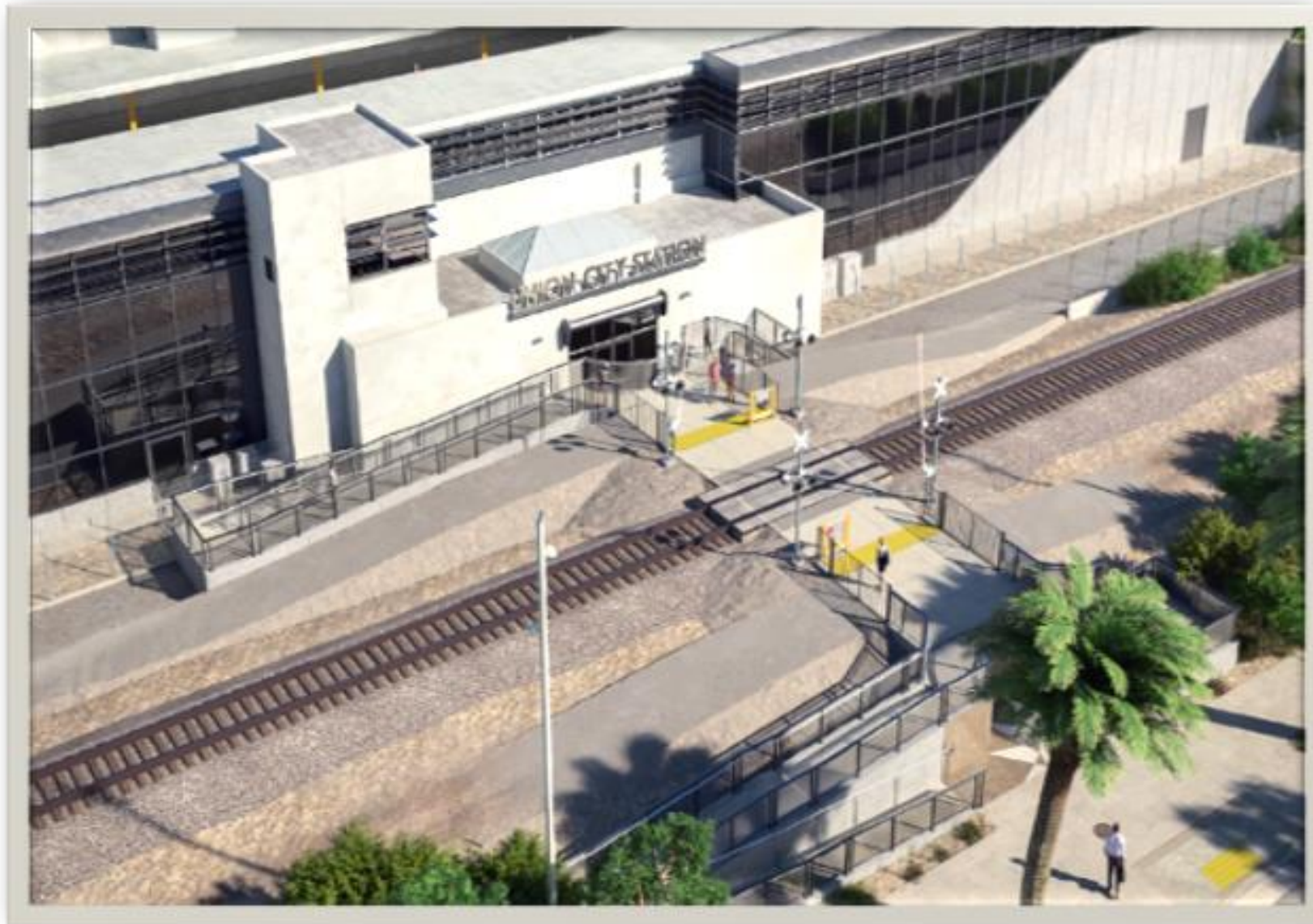


## Gateway Site Vision

- 25 acres
- Up to 535 residential units
- 135 affordable units
- 3-acre new park dedication
- 0.5 acre historic resource area







At Grade  
Crossing  
Status





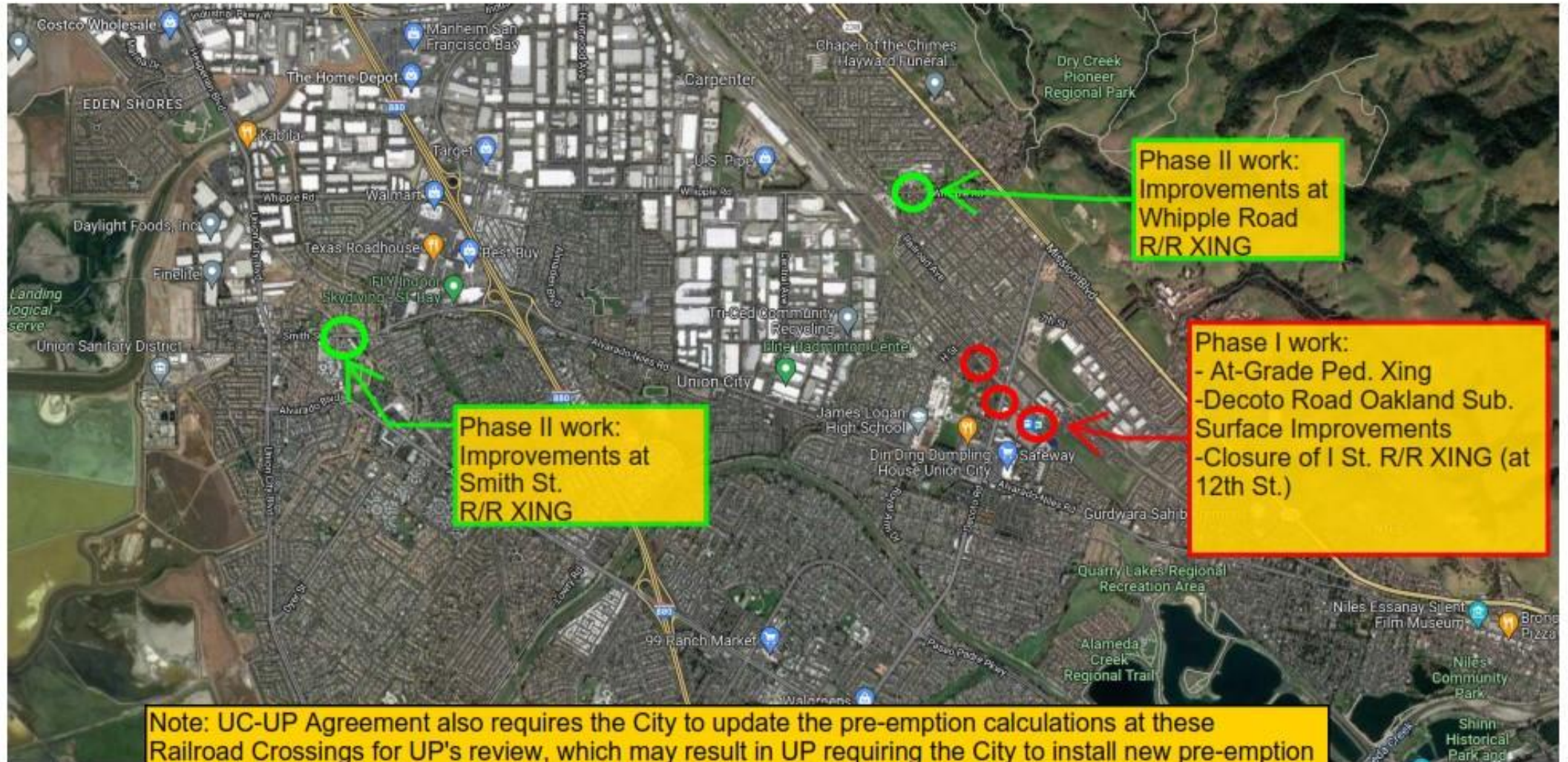
**“I” ST. AT-GRADE  
CROSSING  
(CLOSURE)**

**DECOTO ROAD  
PEDESTRIAN  
CROSSING  
IMPROVEMENTS**

**NEW BART  
PEDESTRIAN  
AT-GRADE XING**



Google Maps



2000 ft





## Next Steps

- **Phase 2 of SoCo Study Underway**
  - Operations planning
  - Ridership Analysis
  - Connectivity planning
  - Equity Analysis
  - Conceptual engineering
  - Cost estimating
  - Implementation/Funding planning
  - Final Report/PSR

Targeted for completion at end of 2022

- **Next Step in Project Development**
  - Environmental Clearance







# 2030 Vision for ACE Network

2032

**Existing service**

**Future baseline service**

Sacramento Extension  
Lathrop to Ceres / Merced Extension  
5th roundtrip to / from Bay Area  
(restoration of 4th roundtrip SKT-SJC)  
Stockton Layover Facility (SKN)

**East Bay Hub service**

Commute direction (into Bay Area)  
Reverse direction (for HSR connection in Merced)

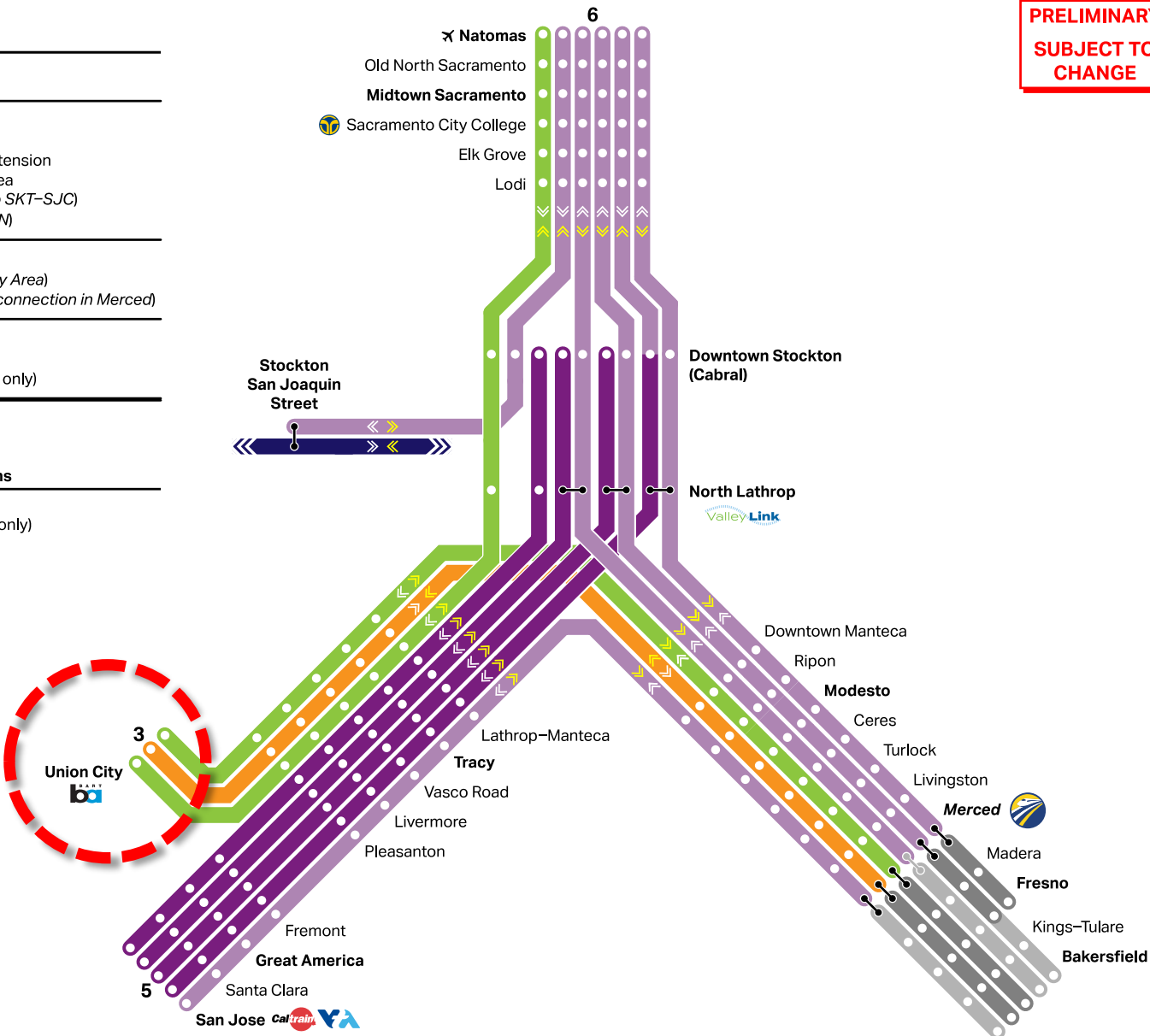
**HSR service**

1 roundtrip (AM and PM)  
1/2 roundtrip (AM only or PM only)

AM direction  
PM direction

**Timed train-to-train connections**

1 roundtrip (AM and PM)  
1/2 roundtrip (AM only or PM only)



## Summary of Review

- QLP Phases and Timing
- QLP Cost and Funding Sources
- Discussed Decoto Complete Streets
- Old Alameda Creek Enhancement Vision and Meetings with Regulatory Agencies and Partners
- City Ventures Update
- BART East Entrance (At-grade Crossing)
- Coordination with MTC and ACE for Union City Station

## Next Steps

- Work with ACTC on Full Funding Plan
- UPRR Agreement and Permits for Construction of East Entrance
- Facilitate City Venture development

# Recommendation

Staff recommends that the City Council accept the Staff Report and ask clarifying questions