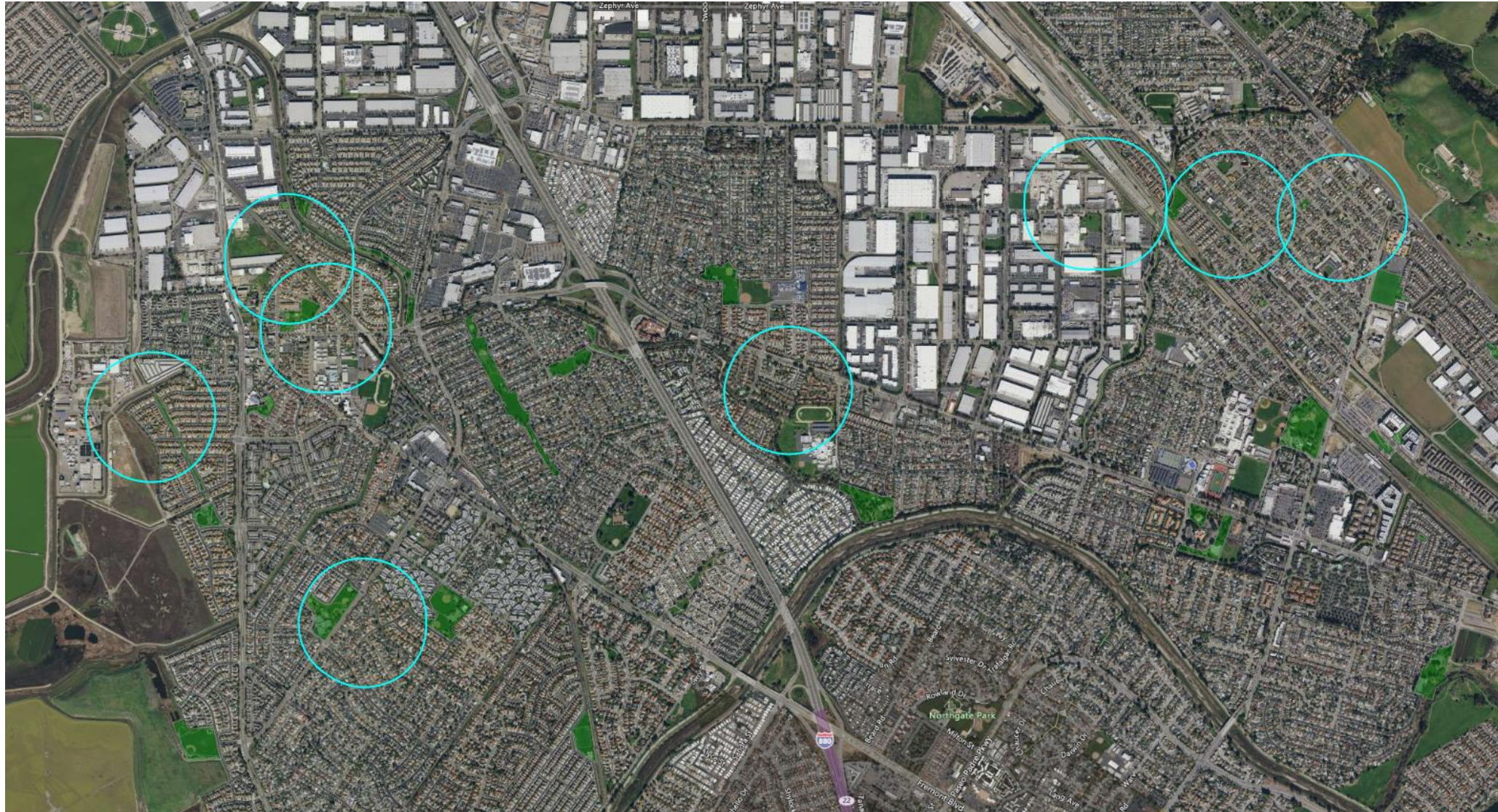


2040 General Plan Update

Item 6.a



City Council Property Ownership Buffer Map

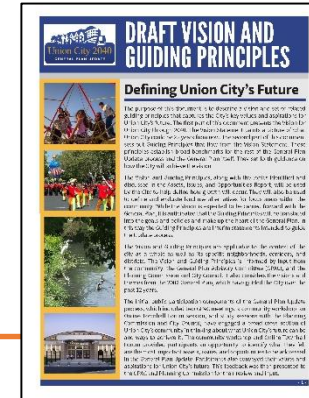




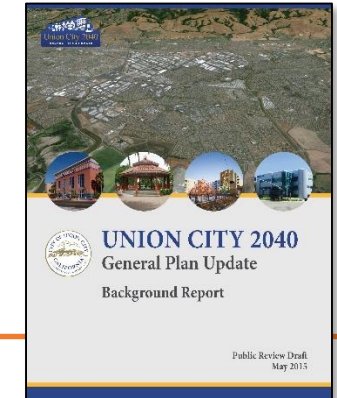
Project initiation



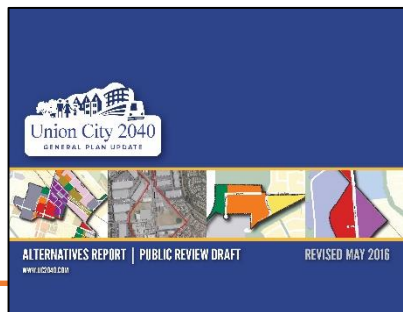
Assets, Issues & Opportunities



Vision and Guiding Principles



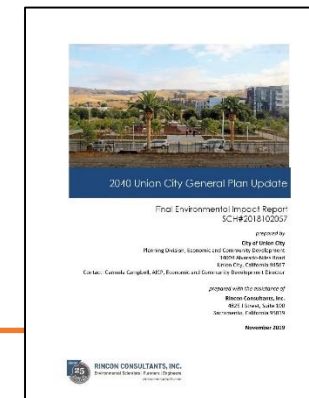
Background Report



Alternatives



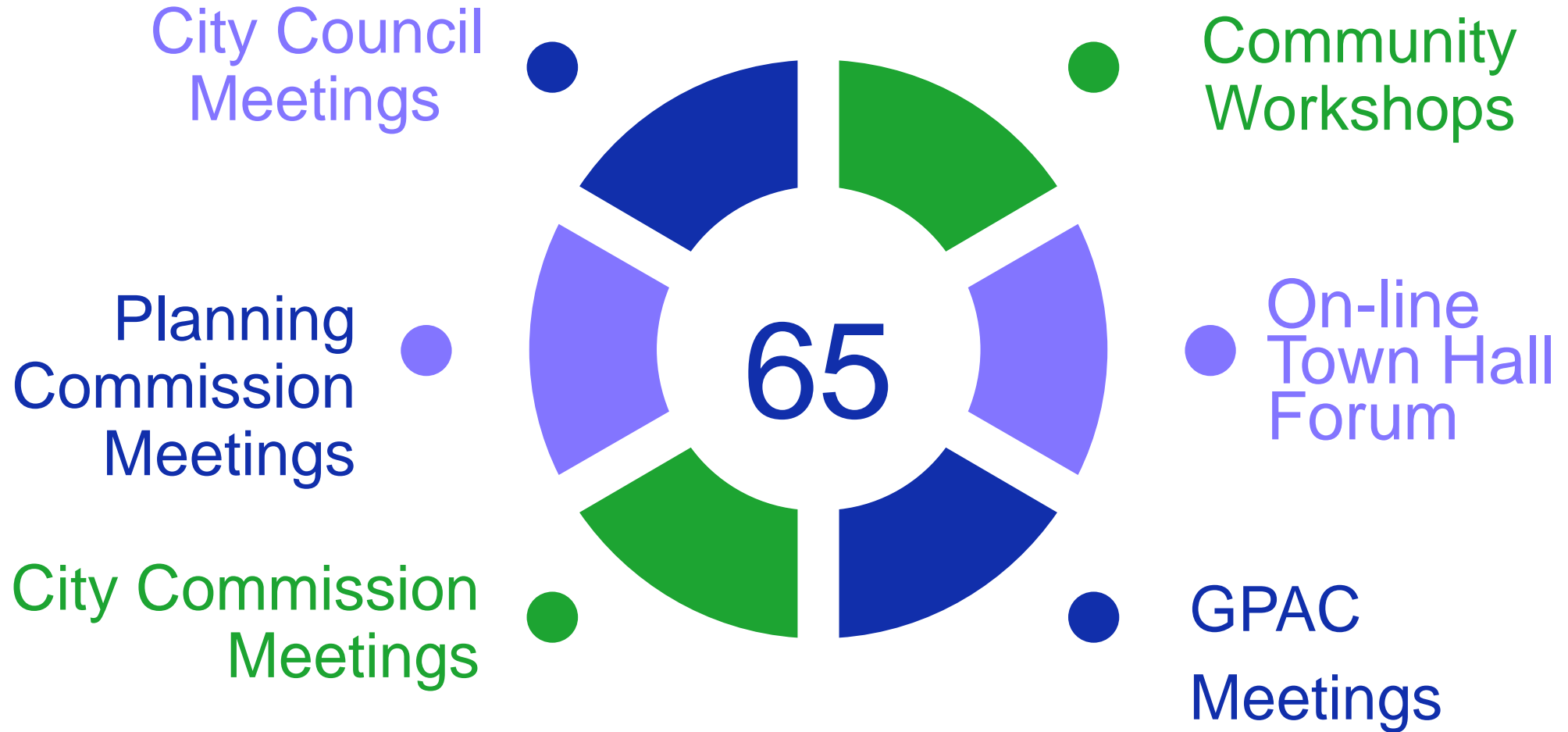
Draft General Plan

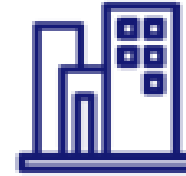


Environmental Impact Report



Plan Adoption





Ensure Fiscal
Solvency

Balanced Land
Uses

Intensify
Employment
Centers

Smart Growth



Create Vibrant
Spaces

Emphasis on
Multi-Modal

Protect Natural
Resources

Celebrating
Community

Draft 2040 General Plan

Economic Development Element

The goals and policies in the Economic Development Element support the **continued growth** of the local economy, increased **fiscal solvency** of Union City, and overall improvement in the **quality of life** for Union City residents.

Health and the Quality of Life Element

The Health and Quality of Life Element is broken down into the following sections: **Healthy Food Access**; **Parks and Open Space**; **Recreation, Arts and Cultural Programming**; **Social Services, Healthcare**; **Seniors**; **Building Social Capital Through Citizen Engagement**; **Unity in Diversity**; and **Environmental Justice**.

Land Use Element

The Land Use Element contains the Land Use Diagram as well as the policies and standards that directly **shape land use decisions** and the resulting **physical form** of Union City.

Draft 2040 General Plan

Community Design Element

This element addresses the overall city **form and identity**, as well as the **natural setting, corridors, gateways, public spaces, and public art**.

Mobility Element

The Mobility Element seeks to create an **efficient, safe, balanced**, and integrated **multi-modal** transportation system that is **accessible** to all users.

Safety Element

The Safety Element addresses **natural hazard risks**, such as earthquakes, wildfire, and flooding, manmade hazards and nuisances, and **disaster preparedness** and **emergency response**.

Public Facilities and Services Element

This element focuses on the variety of public facilities that are necessary to **sustain existing** households and businesses and to **accommodate future** population and employment growth.

Draft 2040 General Plan

Resource Conservation Element

This element seeks to **preserve, protect, and enhance** the **natural and historical resources** that make Union City a unique place.

Special Areas Element

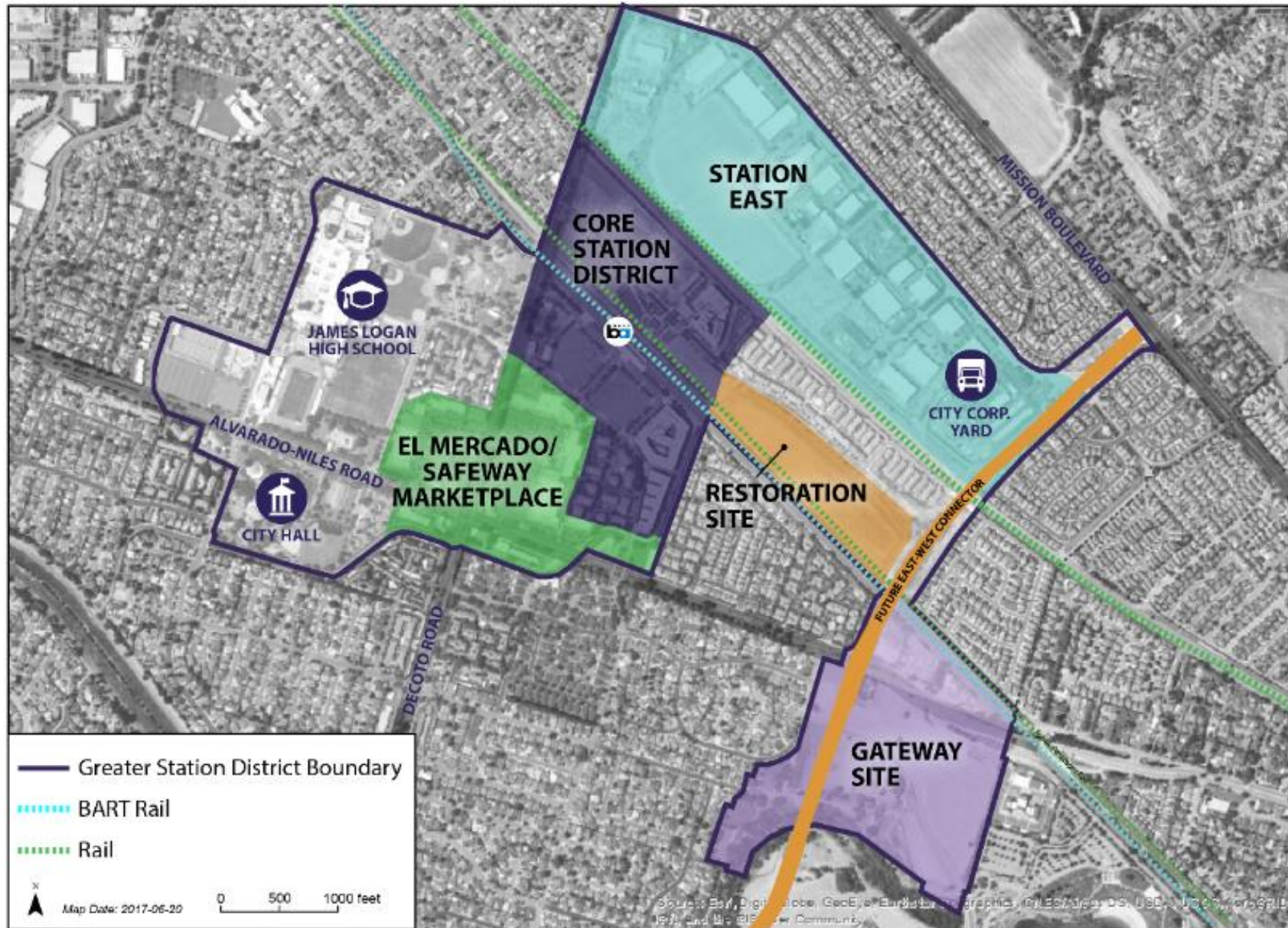
Union City has a number of **distinctive districts** that serve as important commercial, employment, and residential areas. This element contains policies specific to each of these areas.

Housing Element

The purpose of the Housing Element is to identify and analyze **existing and projected housing needs** in order to preserve, improve, and develop **housing for all** economic segments of the community.

*Note: The Housing Element was recently updated in 2015 and is published under separate cover. It **is not included in the current update process** but is considered a part of the General Plan.*

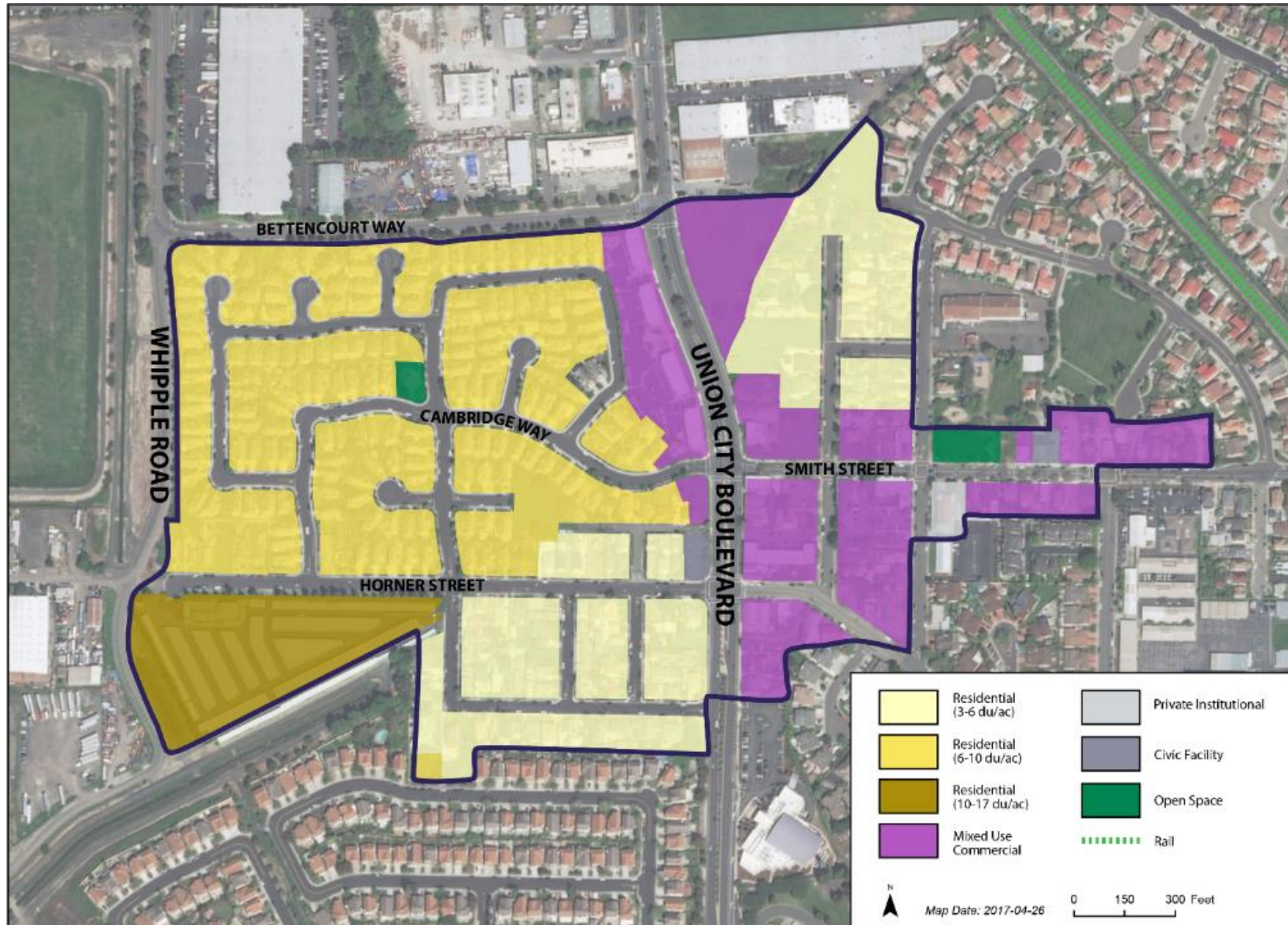
Greater Station District



Union City Boulevard District



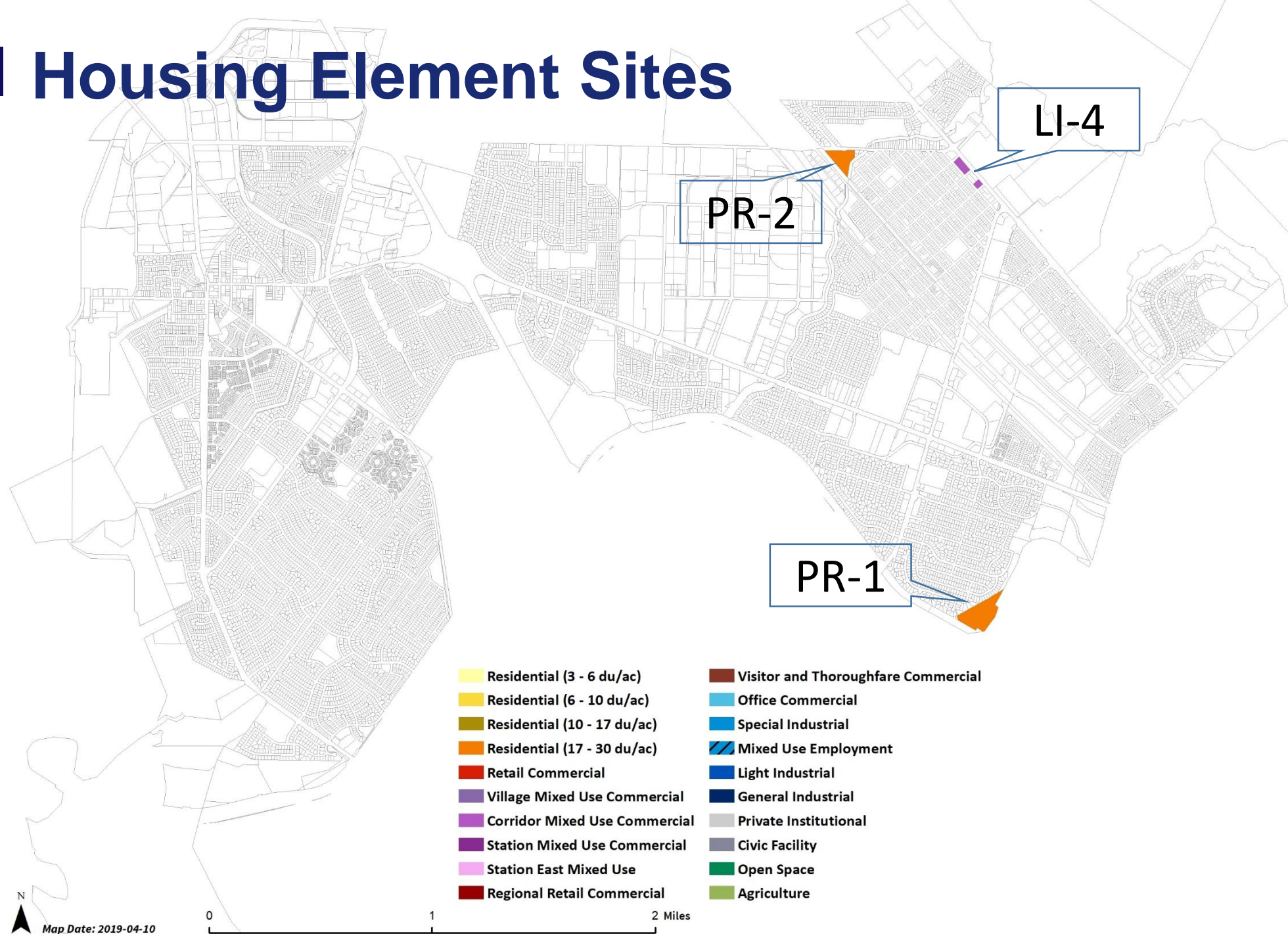
Historic Alvarado District



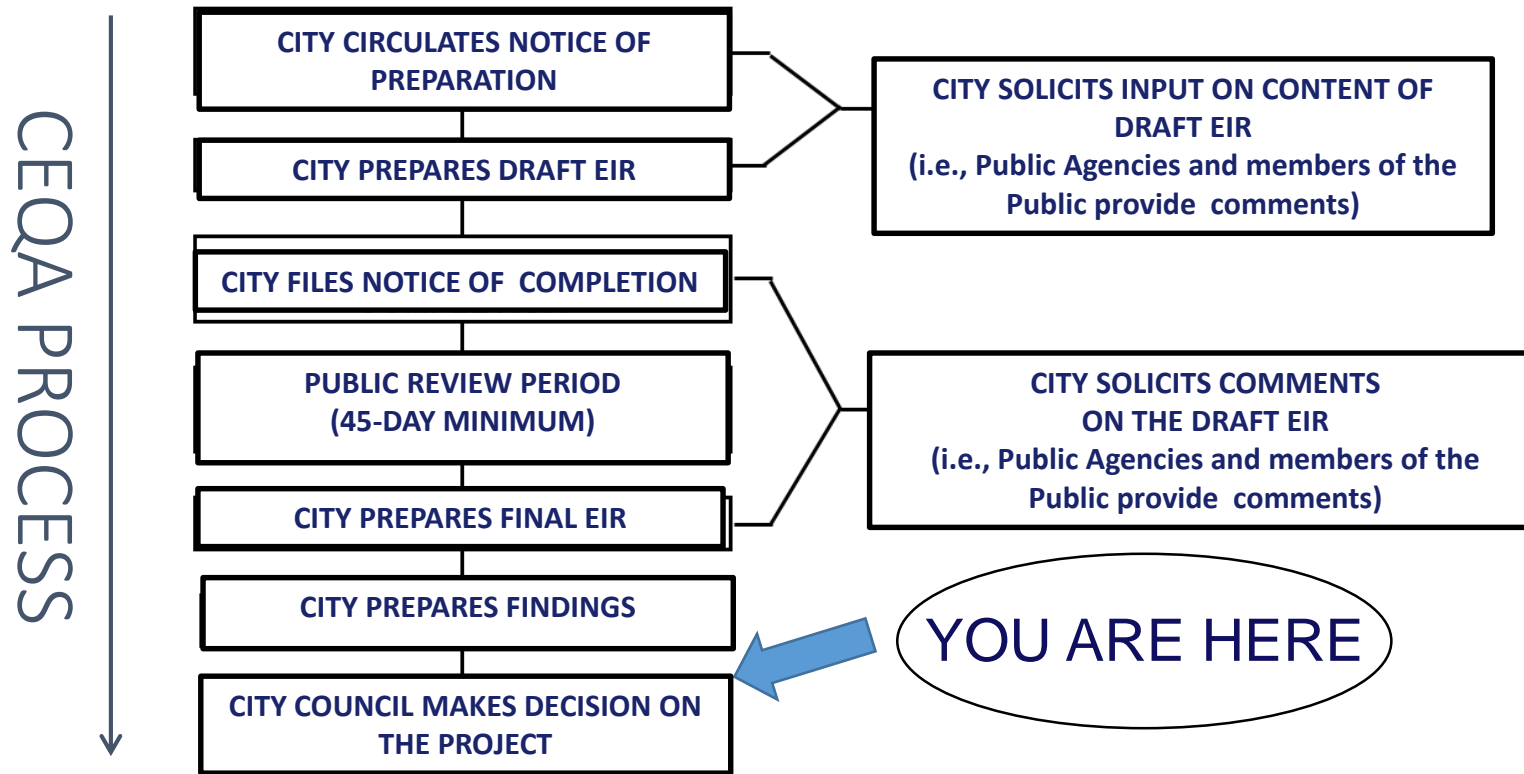
Union Landing



Housing Element Sites



CEQA



EIR Approach

- ☐ EIR screened which land use changes and policies/programs are likely to result in environmental impacts
- ☐ EIR is a programmatic document
- ☐ Three Alternatives to the Draft General Plan were evaluated and considered

Issues Analyzed in the EIR

- ☐ **Aesthetics**
- ☐ Agricultural Resources
- ☐ **Air Quality**
- ☐ **Biological Resources**
- ☐ **Cultural Resources**
- ☐ Energy
- ☐ **Geology and Soils**
- ☐ **Greenhouse Gas Emissions**
- ☐ Hazards and Hazardous Materials
- ☐ Hydrology and Water Quality
- ☐ Land Use and Planning
- ☐ Mineral Resources
- ☐ **Noise**
- ☐ Population and Housing
- ☐ Public Services and Recreation
- ☐ **Transportation and Traffic**
- ☐ Tribal Cultural Resources
- ☐ Utilities and Service Systems
- ☐ Wildfire

Aesthetics

- ☐ Potential to block scenic views and disrupt visual character will tall buildings
- ☐ No mitigation measures available because taller buildings needed to accommodate anticipated growth
- ☐ Meets objectives to provide housing and infill development

Noise

- ☐ Construction noise and vibration impacts
- ☐ Mitigation Measure: N-1 Construction Noise Reduction
- ☐ Not guaranteed that policies and mitigation would reduce noise below applicable thresholds

Greenhouse Gas Emissions

- ☐ 2040 General Plan would result in greenhouse gas emissions above the reduction target established in the EIR to meet statewide targets
- ☐ Mitigation Measure GHG-1: update Climate Action Plan
- ☐ When Climate Action Plan is updated impact may be reduced to less than significant

Transportation

☐ Transportation

- ☐ LOS: Growth results in more vehicle trips that impacts level of service

 - ☐ General Plan cannot influence privately owned vehicles

- ☐ Vehicle Miles Traveled: General Plan would not achieve 15% reduction

 - ☐ General Plan prioritizes infill and reuse development

Statement of Overriding Considerations

- ☐ Project updates General Plan policies to meet legal requirements
- ☐ General Plan reflects current community goals and preferences
- ☐ General Plan is designed to provide: economic development, walkable and bicycle friendly community, high density/infill development, mix of housing types, multimodal transportation, and reduction of greenhouse gas emissions

Comments on the Draft EIR

☐ Four comment letters received on the Draft EIR

- ☐ Alameda County Transportation Commission
- ☐ California Department of Transportation
- ☐ Alameda County Water District
- ☐ State Clearinghouse

Desk Items

- The City received two emails regarding the draft 2040 General Plan
 - Provided to City Council as Desk Item

Planning Commission and GPAC Review

- GPAC reviewed at their November 20th meeting
- Planning Commission reviewed at their November 21th meeting
 - Two members of the public provided comments at PC meeting, which are summarized in the PC meeting minutes



Recommendation

It is recommended that the City Council adopt Resolutions certifying the EIR and adopting the 2040 General Plan.