

# *Union City*

## *Introduction to Districting*

August 13, 2019

Dr. Robert McEntire  
Senior Consultant

# Districting Process

2

Step	Description
<b>Two Initial Hearings</b> June 25 & July 9	<b>Held prior to release of draft maps.</b> <b>Education and to solicit input on the communities in the District.</b> Hearings must be within 30 days of each other
<b>Release draft maps</b>	<b>Maps must be posted at least 7 days prior to 3<sup>rd</sup> hearing.</b>
<b>Two Hearings on Draft Maps</b> Aug 13 & Sept 9	<b>Two meetings to discuss and revise the draft maps and to discuss the election sequencing.</b> Hearings must be within 45 days of each other
<b>Final Hearing &amp; Map Adoption</b> Sept 24	<b>Map must be posted 7 days prior to adoption.</b>
<b>2020</b>	<b>First by-district elections in one council seat (and mayoral seat)</b>
<b>2021</b>	<b>Map adjusted using 2020 Census data</b>
<b>2022</b>	<b>Remaining three council seats hold first by-district elections</b>

# Districting Rules

3

## Federal Laws

- ❑ Equal Population
- ❑ Federal Voting Rights Act
- ❑ No Racial Gerrymandering

## Traditional Redistricting Principles

- ❑ Communities of interest
- ❑ Compact
- ❑ Contiguous
- ❑ Visible (Natural & man-made) boundaries
- ❑ Respect voters' choices / continuity in office
- ❑ *Planned future growth*



Each of the 4 council districts must have about 17,379 residents.

The additional socio-economic data can be used, by those interested, to assist in identifying “communities of interest.”

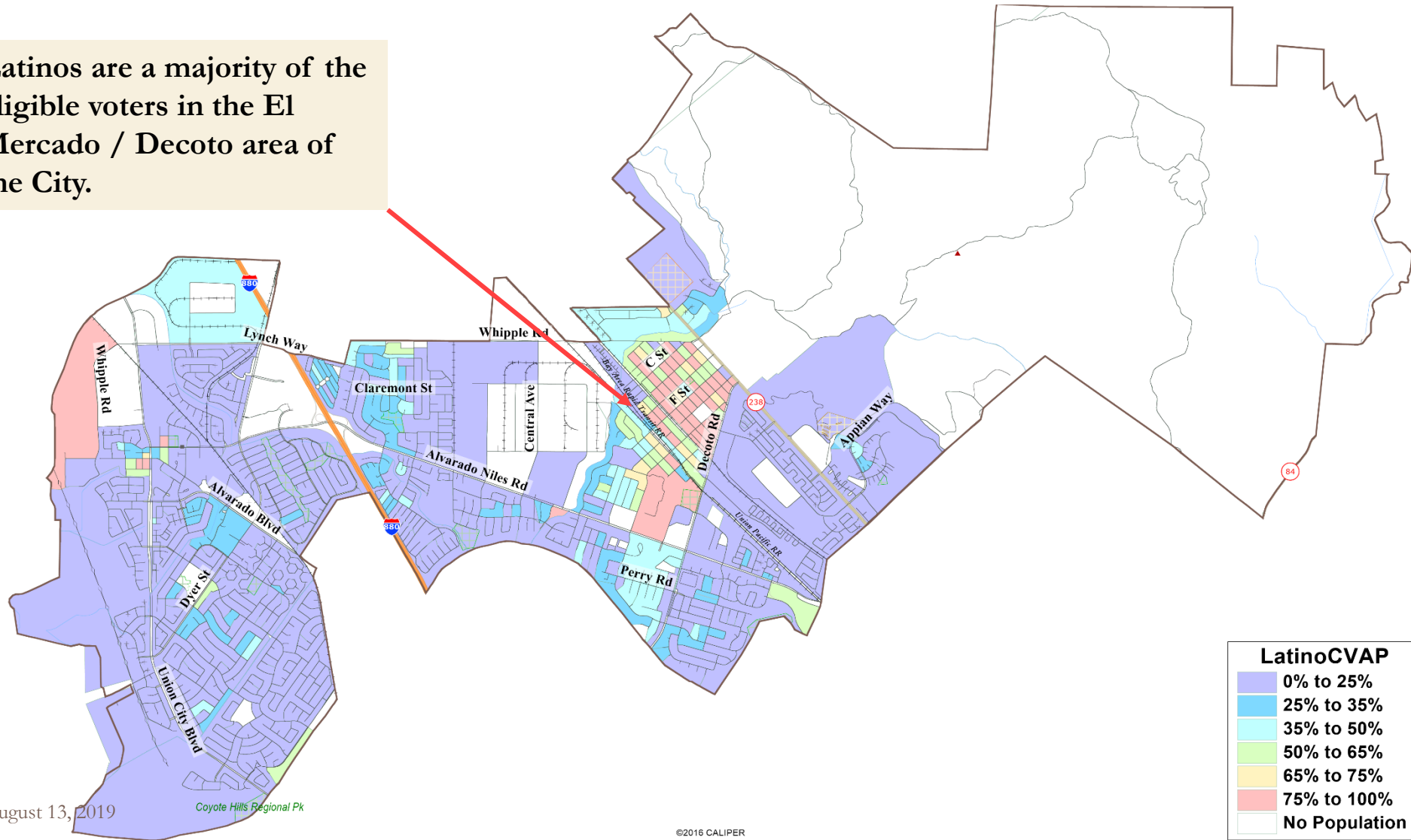
Category	Field	Count	Pct	Category	Field	Count	Pct
	Total Pop	69,516		ACS Pop. Est.	Total	73,402	
Total Pop	Hisp	15,895	23%	Age	age0-19	16,555	23%
	NH White	10,009	14%		age20-60	42,090	57%
	NH Black	4,420	6%		age60plus	14,757	20%
	Asian-American	36,697	53%	Immigration	immigrants	32,700	45%
Citizen Voting Age Pop	Total	47,245			naturalized	21,193	65%
	Hisp	9,245	20%	Language spoken at home	english	26,466	39%
	NH White	9,180	19%		spanish	9,578	14%
	NH Black	2,853	6%		asian-lang	21,865	32%
	Asian/PacIsl.	24,547	53%		other lang	10,686	16%
Voter Registration (Nov 2016)	Total	36,269		Language Fluency	Speaks Eng. "Less than Very Well"	15,290	22%
	Latino est.	10,329	28%	Education (among those age 25+)	hs-grad	27,458	53%
	Spanish-Surnamed	9,279	26%		bachelor	12,830	25%
	Asian-Surnamed	8,979	25%		graduatedegree	6,093	12%
	Filipino-Surnamed	3,069	8%	Child in Household	child-under18	7,250	35%
	NH White est.	10,538	29%	Pct of Pop. Age 16+	employed	35,548	59%
	NH Black	2,867	8%	Household Income	income 0-25k	2,287	11%
Voter Turnout (Nov 2016)	Total	25,744			income 25-50k	3,015	15%
	Latino est.	7,425	29%		income 50-75k	3,356	16%
	Spanish-Surnamed	6,670	26%		income 75-200k	9,444	46%
	Asian-Surnamed	6,296	24%		income 200k-plus	2,579	12%
	Filipino-Surnamed	2,103	8%	Housing Stats	single family	16,994	79%
	NH White est.	7,554	29%		multi-family	4,634	21%
	NH Black	2,033	8%		rented	7,054	34%
Voter Turnout (Nov 2014)	Total	13,123			owned	13,627	66%
	Latino est.	3,524	27%	Total population data from the 2010 Decennial Census. Surname-based Voter Registration and Turnout data from the California Statewide Database. Latino voter registration and turnout data are Spanish-surname counts adjusted using Census Population Department undercount estimates. NH White and NH Black registration and turnout counts estimated by NDC. Citizen Voting Age Pop., Age, Immigration, and other demographics from the 2012-2016 American Community Survey and Special Tabulation 5-year data.			
	Spanish-Surnamed	3,165	24%				
	Asian-Surnamed	2,984	23%				
	Filipino-Surnamed	995	8%				
	NH White est.	4,314	33%				
	NH Black est.	1,210	9%				



# Latino CVAP Concentrations

5

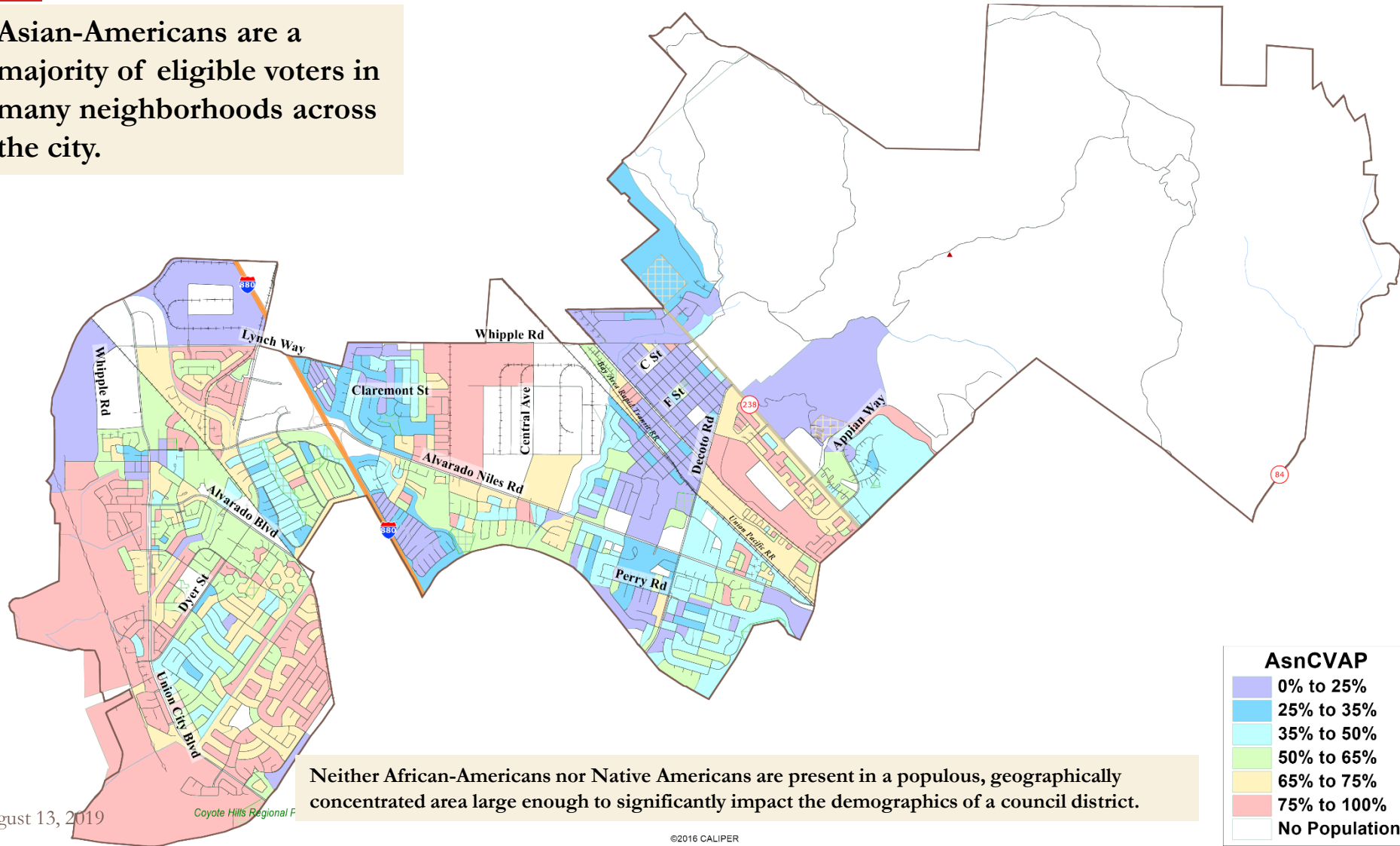
Latinos are a majority of the eligible voters in the El Mercado / Decoto area of the City.



# Asian-American CVAP Concentrations

6

Asian-Americans are a majority of eligible voters in many neighborhoods across the city.



# Defining Communities of Interest

7

## 1<sup>st</sup> Question: what is your neighborhood or community of interest?

**A Community of Interest is generally defined as a neighborhood or community of shared interests, views, problems, or characteristics.**

Possible community feature/boundary definitions include:

- ❑ School attendance areas
- ❑ Natural neighborhood dividing lines, such as highway or major roads, rivers, canals, and/or hills
- ❑ Areas around parks and other neighborhood landmarks
- ❑ Common issues, neighborhood activities, or legislative/election concerns
- ❑ Shared demographic characteristics
  - ❑ Such as similar levels of income, education, or linguistic isolation

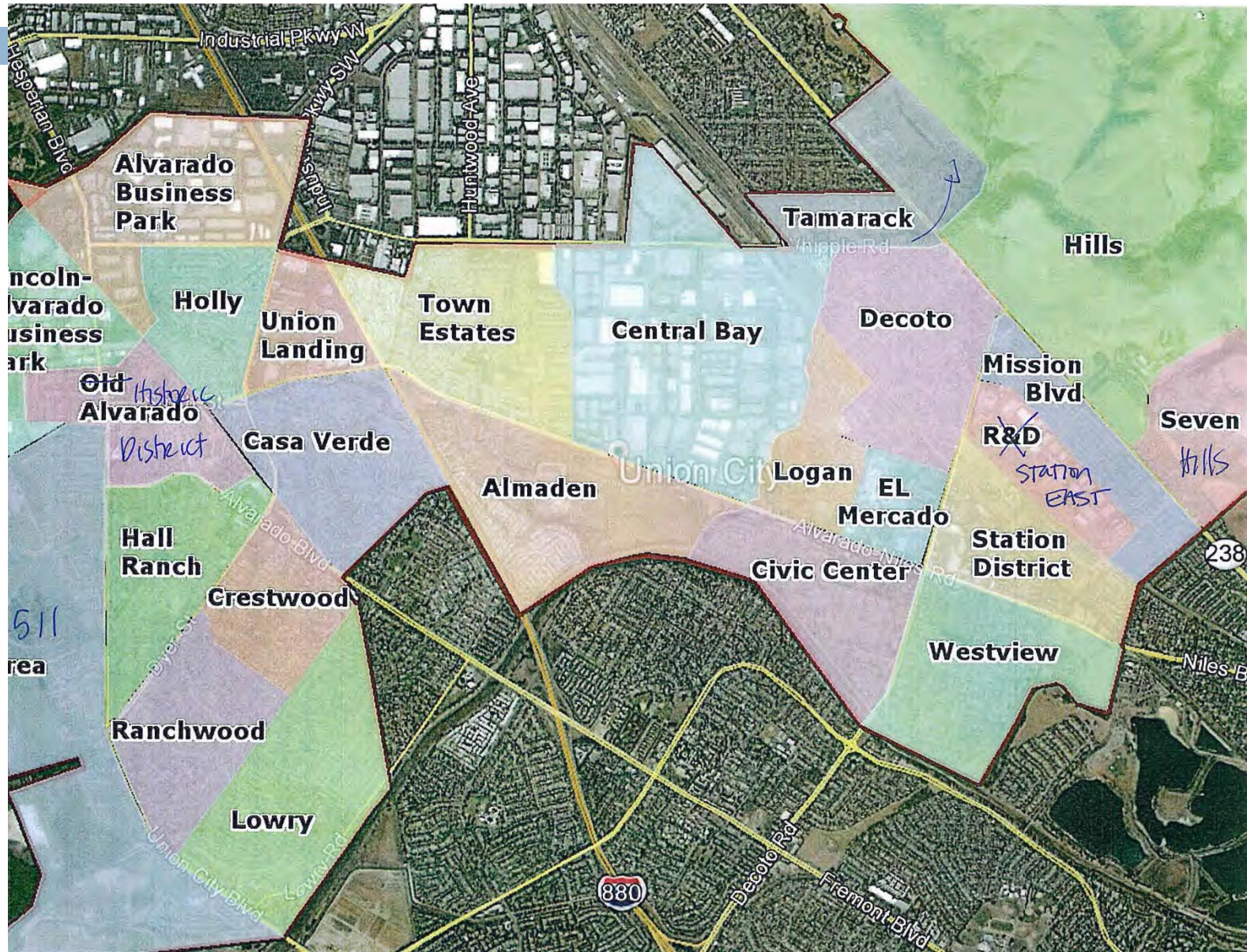
## 2<sup>nd</sup> Question: Does a Community of Interest want to be united in one district, or to be divided to have a voice in multiple elections?





# Draft City Neighborhoods Map

8





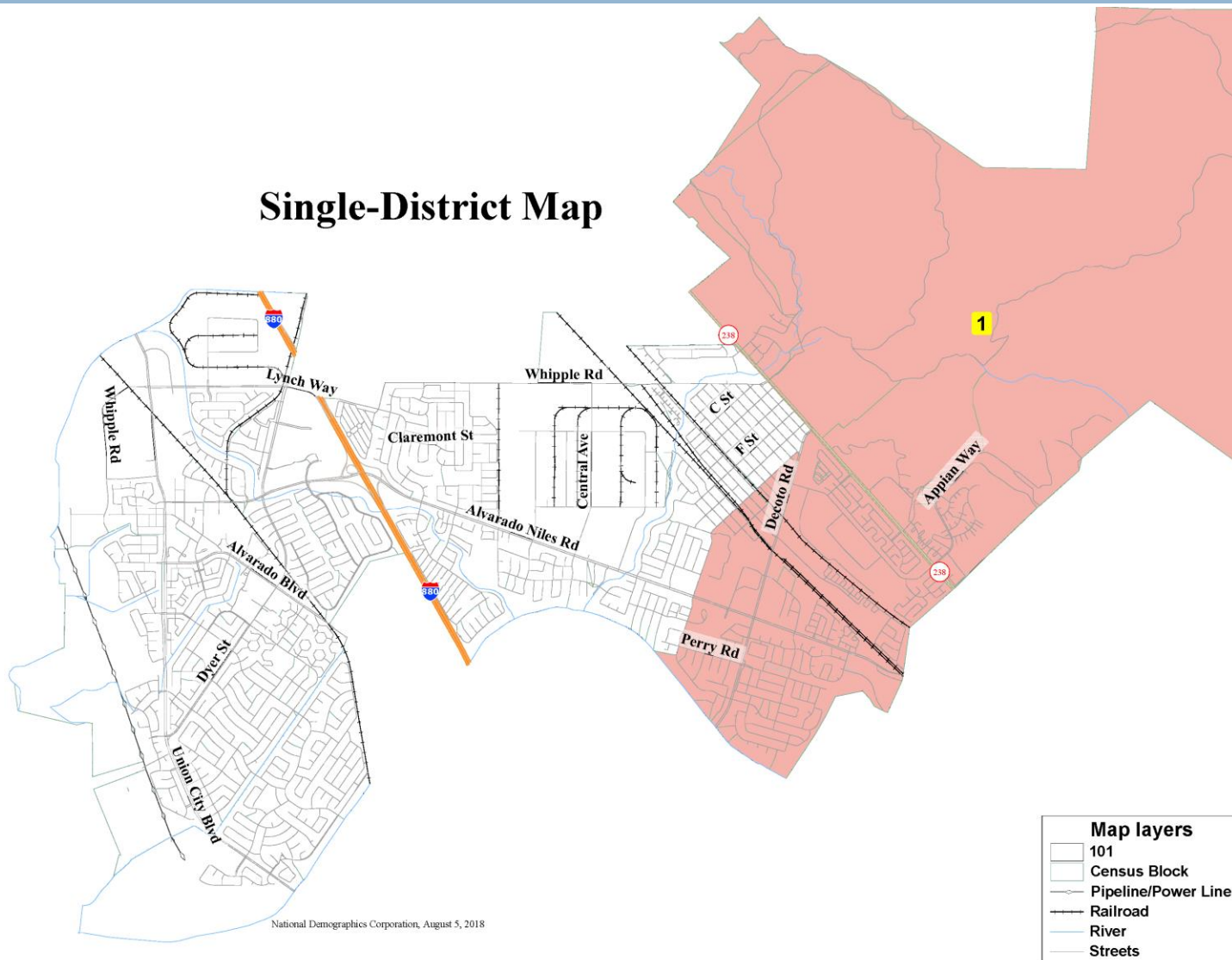
9

## Draft Maps

These maps can be reviewed in much more detail using the interactive map viewer, available [online at this link](#).

Focuses on East side of town and provides input for grouping a community of interest with a population of 18,037.

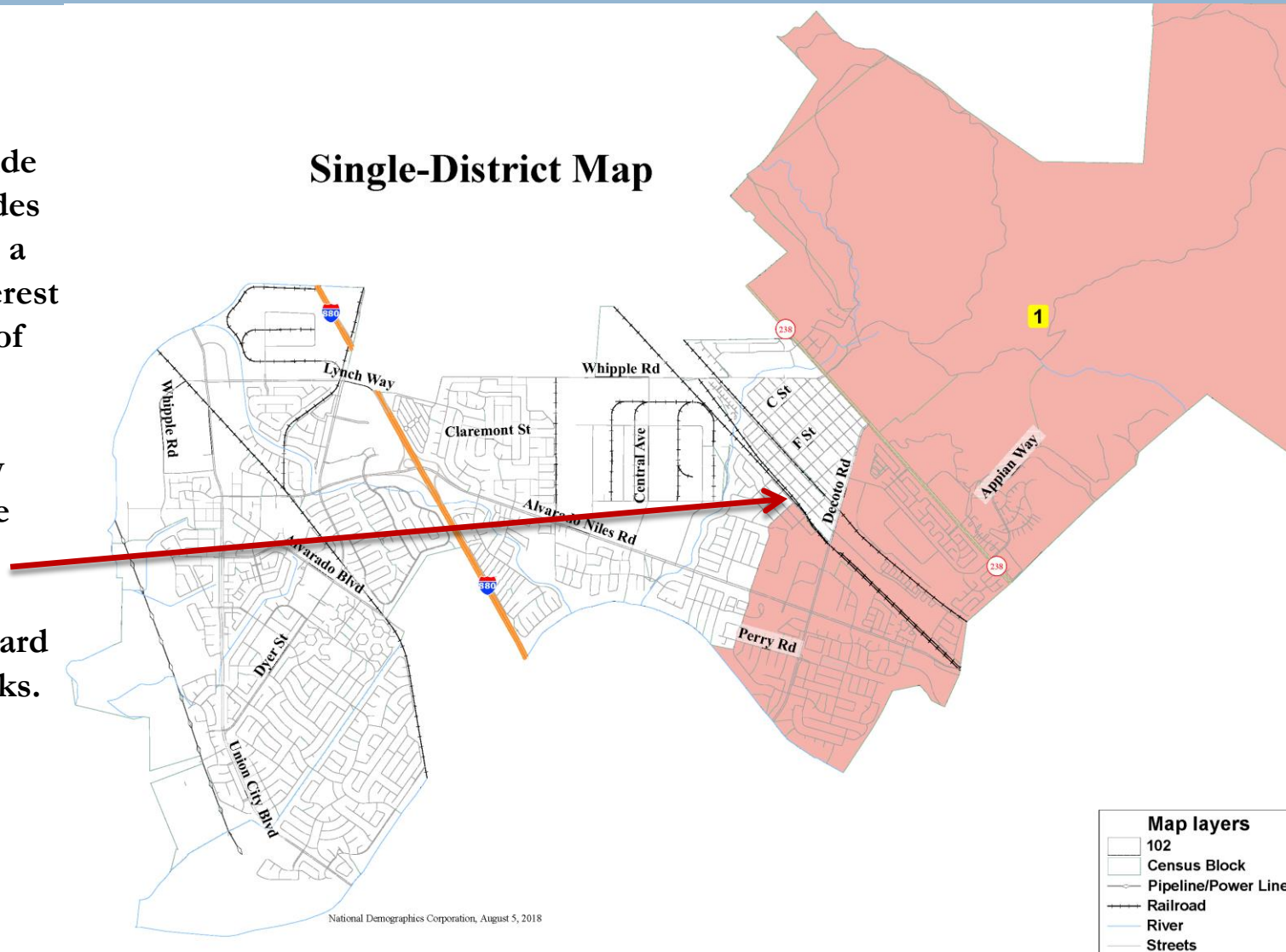
## Single-District Map



Focuses on East side of town and provides input for grouping a community of interest with a population of 16,996.

Differs from 101 by cutting out triangle starting at Decoto Rd/H-Street intersection westward to the railroad tracks.

## Single-District Map

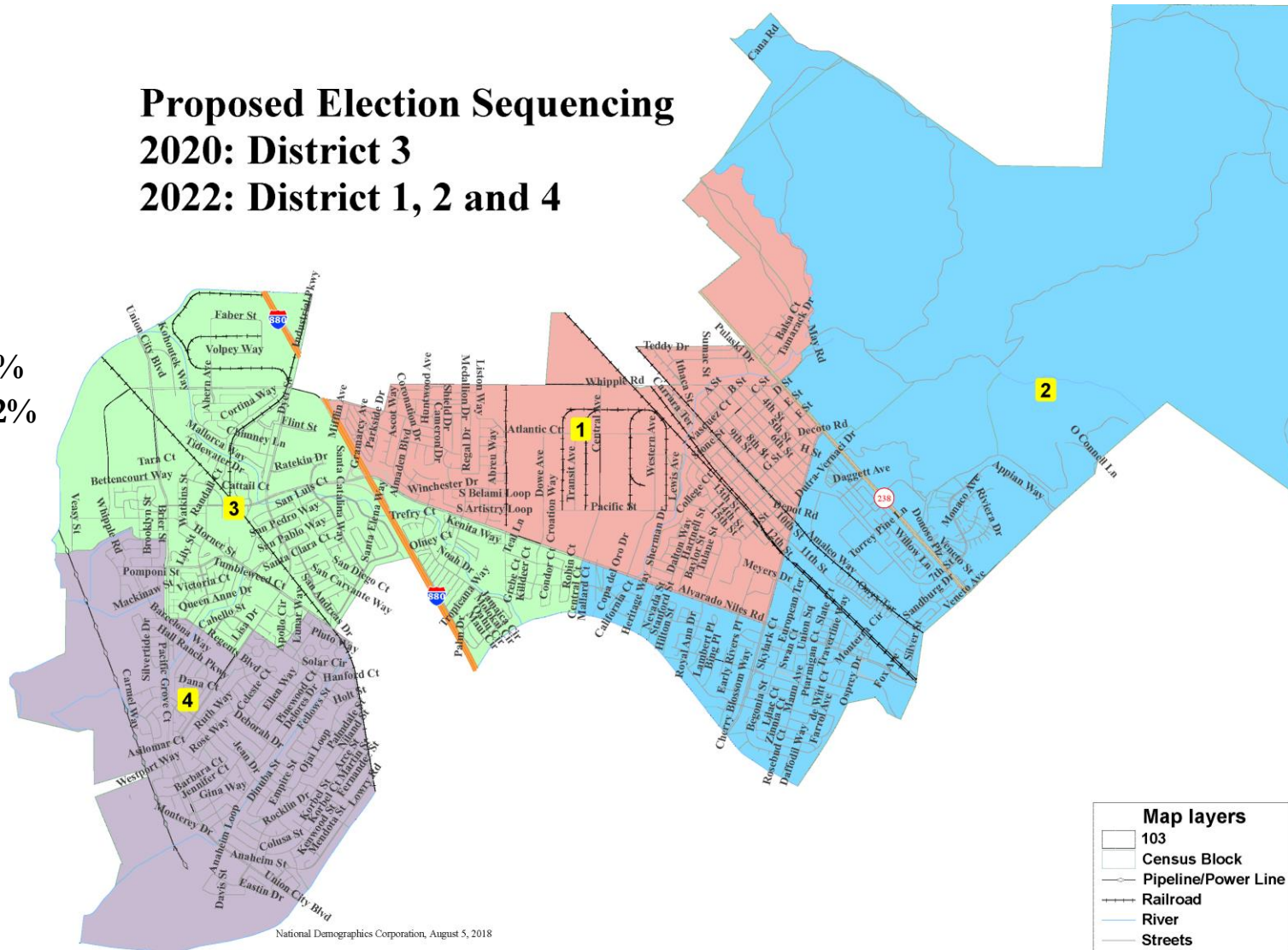




## Proposed Election Sequencing 2020: District 3 2022: District 1, 2 and 4

Focus on Council  
District #1 provides  
Latino District of 51%  
by Population and 42%  
by CVAP.

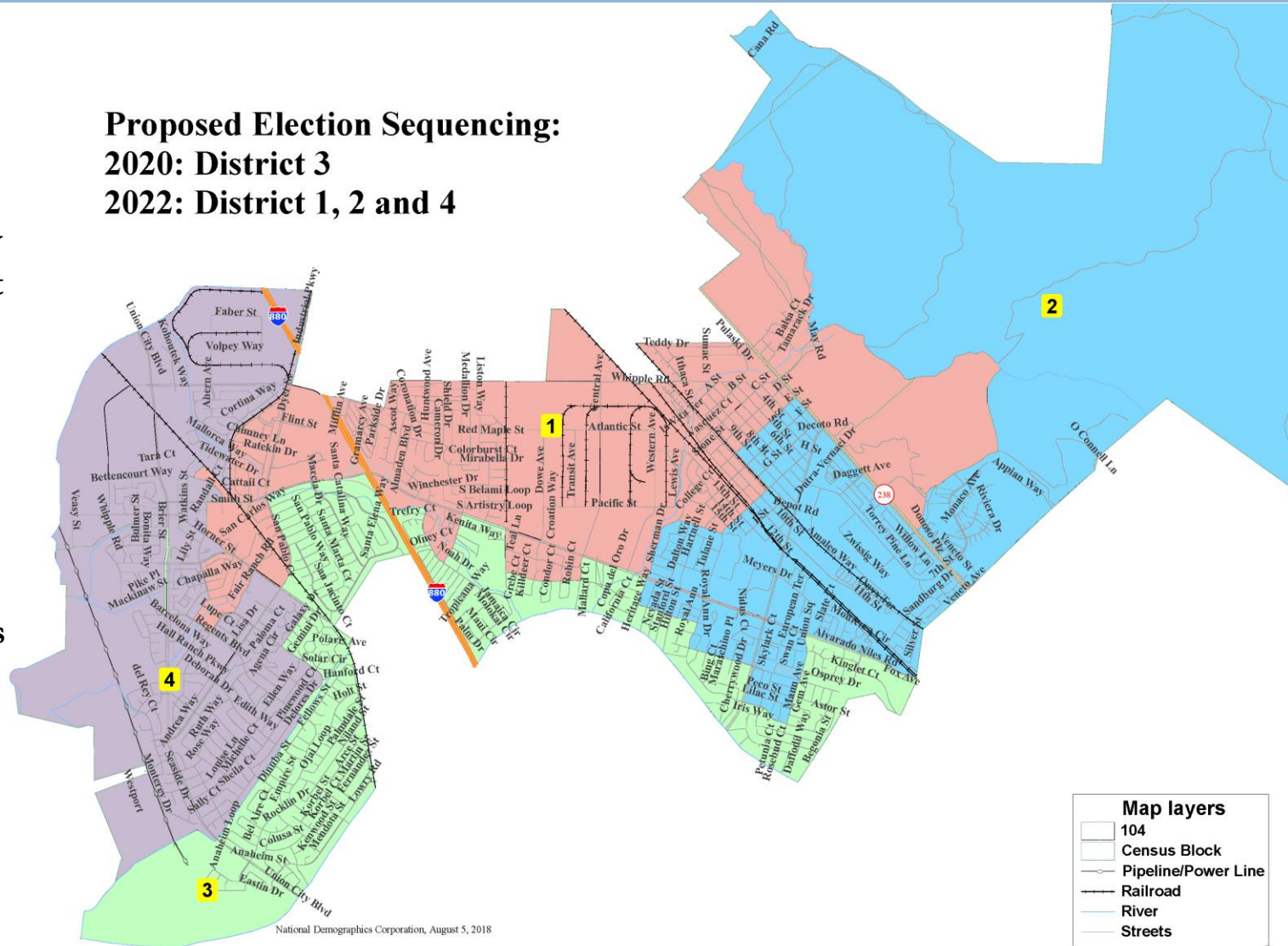
Closely follows the  
Neighborhood  
Communities Map.



## Proposed Election Sequencing: 2020: District 3 2022: District 1, 2 and 4

This map shows how each Council District can cover a broad cross-section of the community.

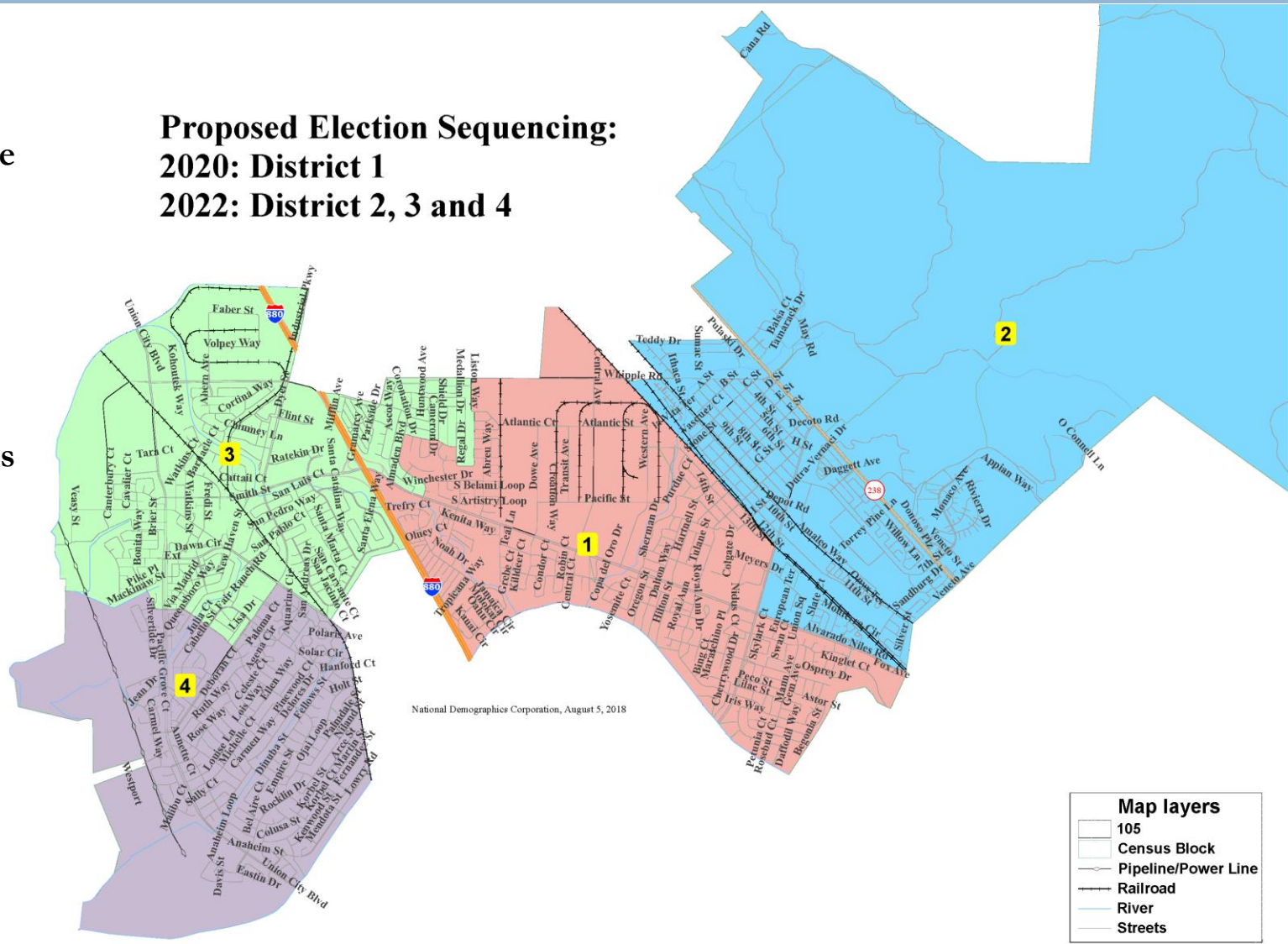
Metrics like education and household income across each district is relatively similar.



This map follows the railroad in the east with a population balancing cutout at Alvarado-Niles and Decoto Rd.

District three crosses the 980 for population balance.

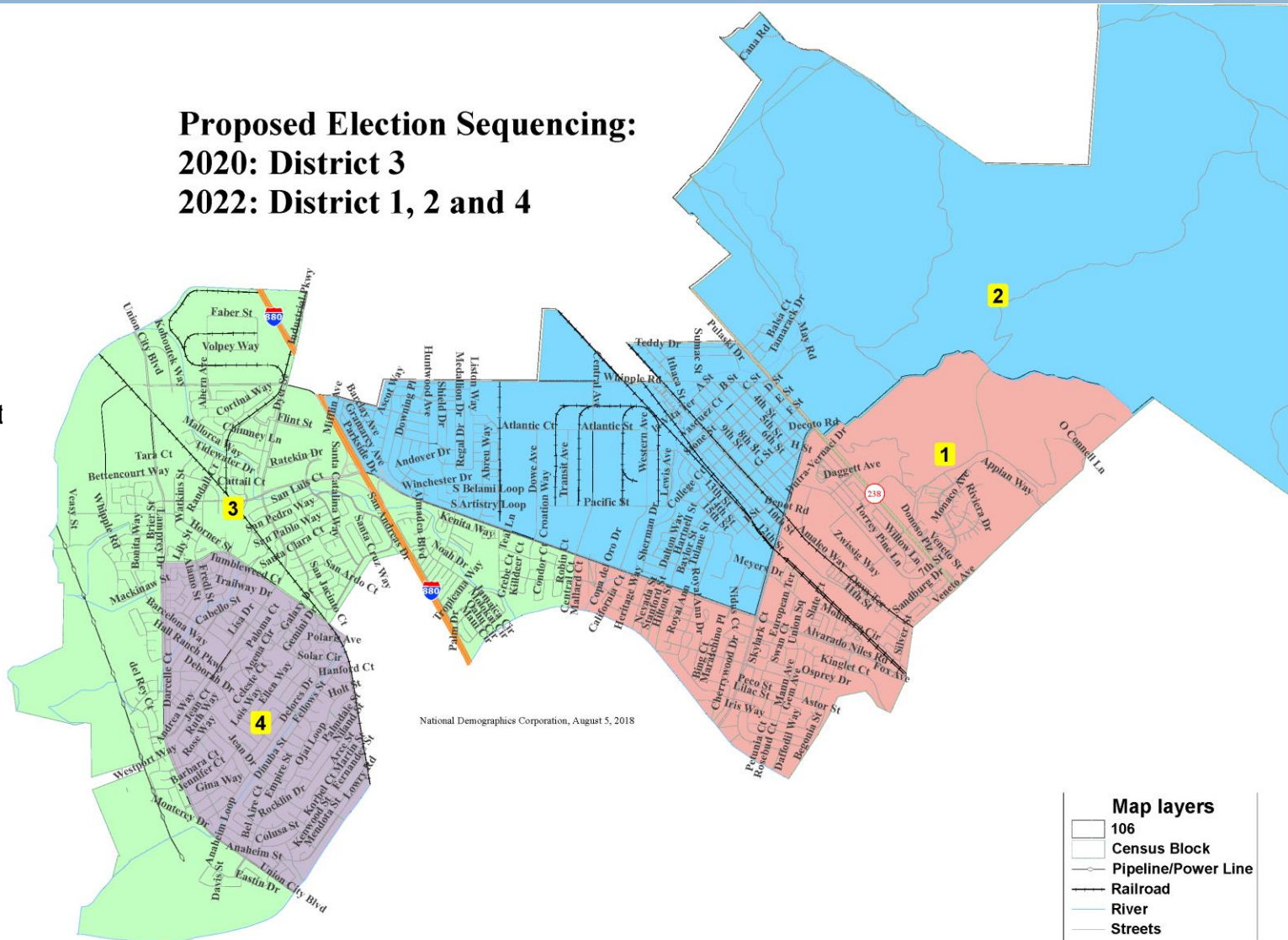
**Proposed Election Sequencing:**  
**2020: District 1**  
**2022: District 2, 3 and 4**





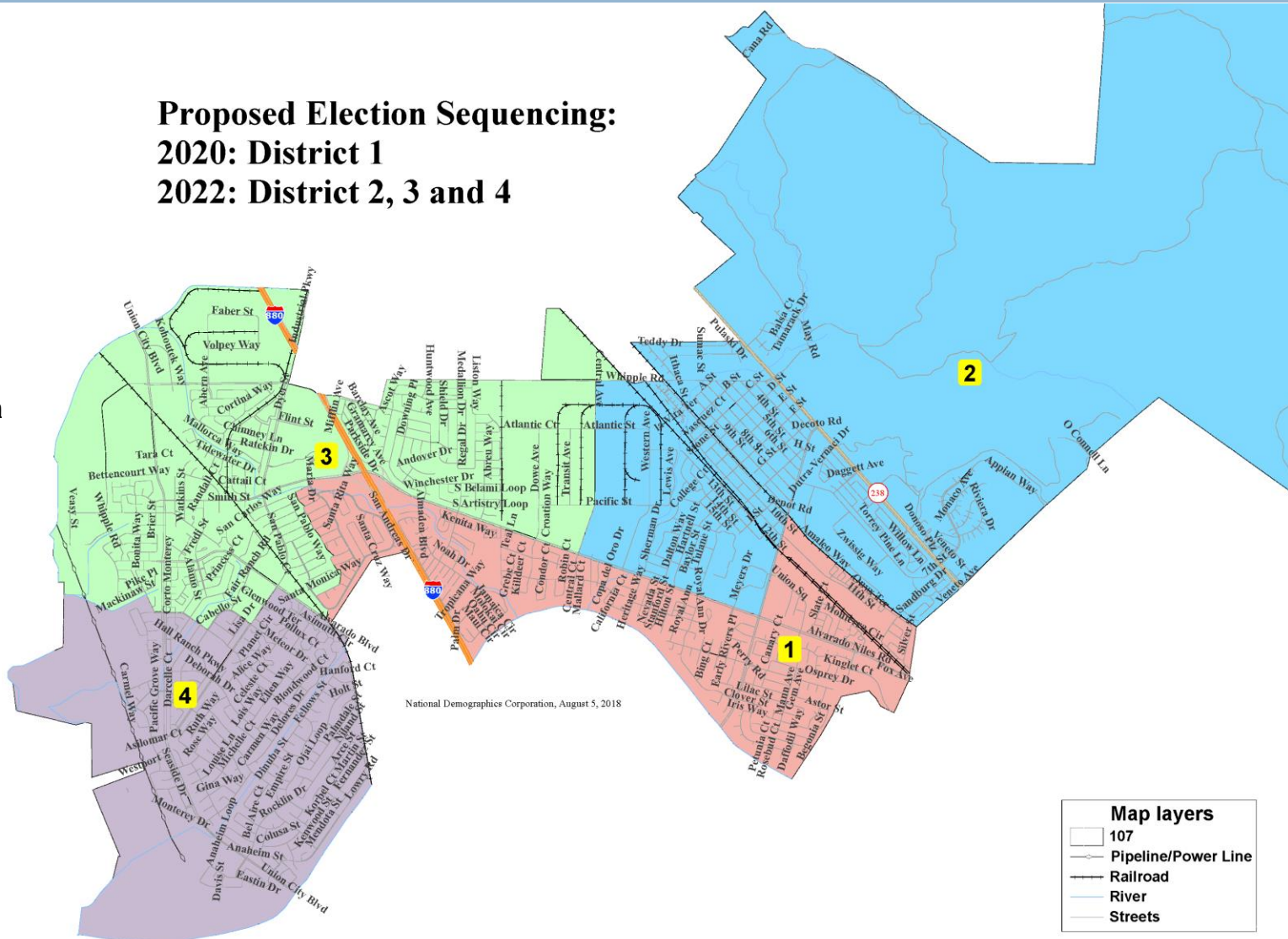
Provides a similar approach to the north-south divide in the center of town and a completely different approach in the west while following Neighborhood Communities.

**Proposed Election Sequencing:**  
**2020: District 3**  
**2022: District 1, 2 and 4**



Unique from other options by splitting the north and uniting the south in the center of town.

## Proposed Election Sequencing: 2020: District 1 2022: District 2, 3 and 4





# Discussion

17

1. Which map or maps do you prefer? What makes that map (or maps) best?
2. Any requests for revisions or new maps?

